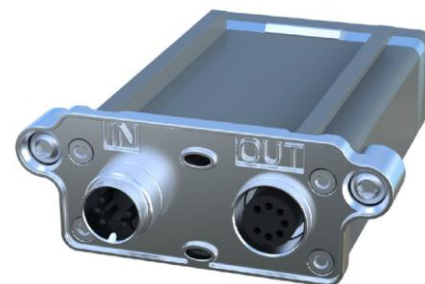


Pluggable Remote Control Unit (RCU) for Tongyu Variable Electrical Tilt (VET) basestation antennas, with adjustable electrical downtilt and appropriate mechanical interface.

- Pre-Configuration
- AISG 2.0/3GPP compatibility
- Suitable for Tongyu Tri-band, Quad-band and Penta-band antennas
- Exchangeable
- Daisy chain possibility



Electrical specifications	
Product number	TRCU-TQ10P2V01
Standard	AISG 2.0/3GPP release 10
AISG device type	Single-RET(0x01) or Multi-RET(0x11) *
Input voltage range	10-30V DC (pin 1 or pin 6)
Power consumption	<1W(idle) ; <6W(tilting)
Connectors	2 x 8 pin connector according to IEC 60130-9; conforming to AISG2.0 Daisy chain in: male; Daisy chain out: female Ready for daisy chain connection
Hardware interfaces	RS 485A/B (pin 5, pin 3); power supply (pin 1, pin 6); DC return (pin 7); conform to AISG2.0
Data rate	9.6 kbps
Firmware	Remotely upgradeable by .bin or .xml file**
Adjustment time (full range)	90sec (typically, depending on antenna type)
Adjustment cycles	> 10,000
Mechanical specifications	
Dimensions(mm)	98×62×33
Weight(kg)	0.25
Housing material	Profile: Aluminum, coated Connector: Zinc alloy with polyester powder, coated varnished housing (RAL 7035, orange gray)
Environmental specifications	
Temperature range	−40 °C to +65 °C
Lightning protection	3KA (8/20μs) @ Pin 5& Pin3 5KA (8/20μs) @ Pin 1/Pin 6 & Pin7
Protection class	IP 24 (Installed)

*The default Single-RET can be switch to Multi-RET by firmware update.

*The .xml file is supported by Ericsson BTS system only.

Notes:

- Install RCU according to installation manual
- Tongyu variable electrical tilt Tri-band, Quad-band and Penta-band antennas named as “xxDEI-xx” only, please refer to Tongyu’s market supporter for more information