

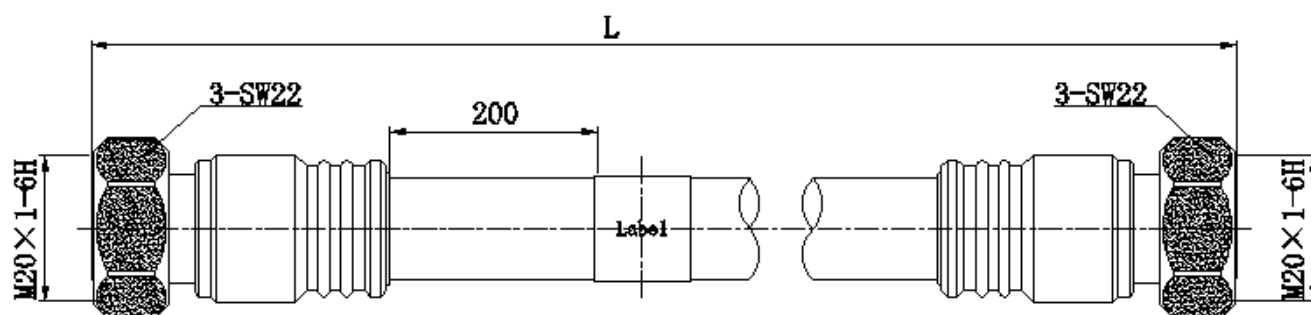
**1/2" Ultra soft jumper cable, with 4.3-10 connector male to 4.3-10 Male.**

### Electrical specifications

Frequency Range	DC to 6 GHz
VSWR	$\leq 1.15$ (DC~3GHz)
Impedance	50 $\Omega$
Insertion loss	$\leq 1.16$ dB
Dielectric Strength	2500 V rms
Insulation resistance	$\geq 5000$ M $\Omega$
Center contact resistance	$\leq 1.5$ m $\Omega$
Outer contact resistance	$\leq 0.2$ m $\Omega$
Intermodulation IM3(2x43dbm)	$\leq -158$ dBc

### Mechanical specifications

Connector specification	IEC 61169-54
Length	4m
Connector type 1	4.3-10 Male
Connector type 2	4.3-10 Male
Cable type	1/2" Ultra soft
Cable outer jacket	Black PE
Minimum bending radius	17mm (Single)
Max. tensile strength	750N
Operating temperature	-45 °C to +85 °C
Salt mist	96h (IEC 60068-2-11)
Humidity	$\leq 95\%$
IP grade	IP67



All dimensions are in mm