



NOTE

1, Only qualified personnel are allowed to install the antenna.

2, Appearance of the actual antenna may differ from the pictures.

Installation tools



13mm combination wrench (2 PCS)



16 mm combination wrench (2 PCS)

Bracket Subassembly



Antenna
1 PCS



Bracket
1 PCS



M8 Square neck
screw /M8
4 PCS



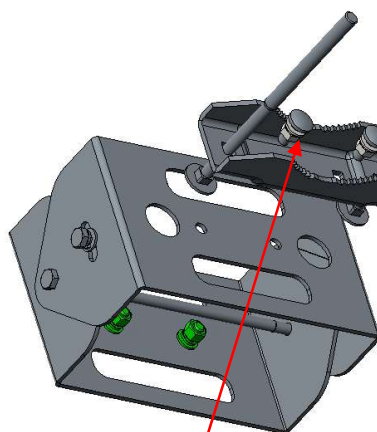
Clamp
2 PCS



M10x180 Square neck
screw 2 PCS

1

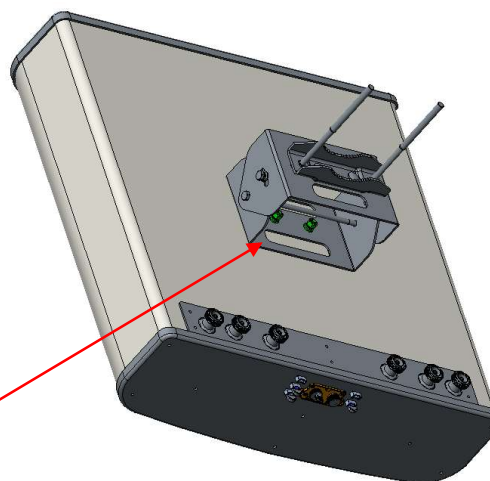
Install the bracket



M8 Square neck
screw

M10x180 Square
neck screw

M8 Square neck
screw

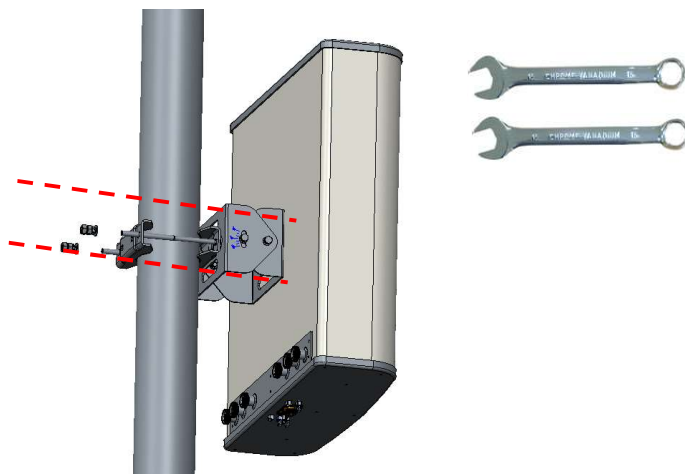


Put two screws M10x180 through the clamp, then use two screws M8 to fix the clamp with the bracket, at last put the bracket assembly at the bottom of the antenna.



2 Install the Clamp

Install the antenna to the proper position of the pole (pole size: $\Phi 50-115\text{mm}$); Fix the antenna on the holding rod with the second clamp, elastic washer, flat washer and nuts.



3 Adjust the mechanical down tilt angle

Through the swing of the two bracket pieces, completing the adjustment of vertical direction ($\pm 15^\circ$), then tighten two M8 external hexagon screws.

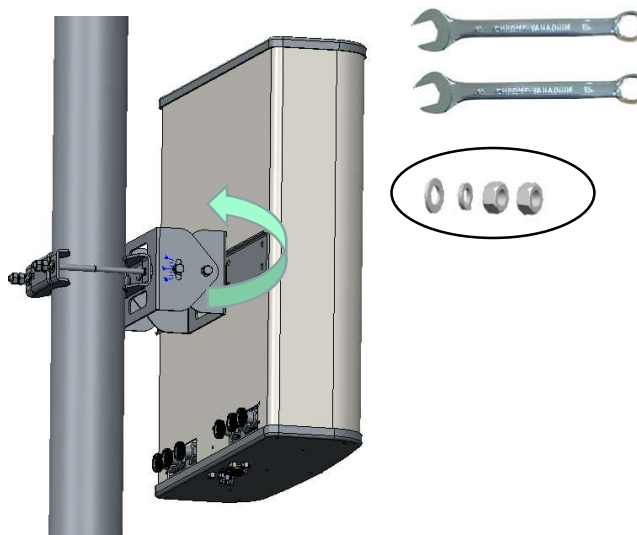


Table 1

Finally, tighten all the nuts.
Recommended torque see Table 1.

Screws size	Torque
M8	18 Nm
M10	32 Nm

Note:

Make sure the antenna is installed in a safe and suitable location and well clear away from high power lines
Do not attempt to carry out installation when it is raining, snowing or during stormy weather
Do not attempt to install the antenna on a pole of diameter other than the specified 50~115mm

For particular installation, please contact Tongyu Communication Inc.
Website: www.tycc.cn