

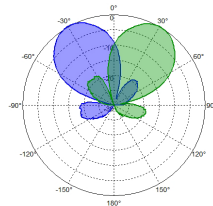
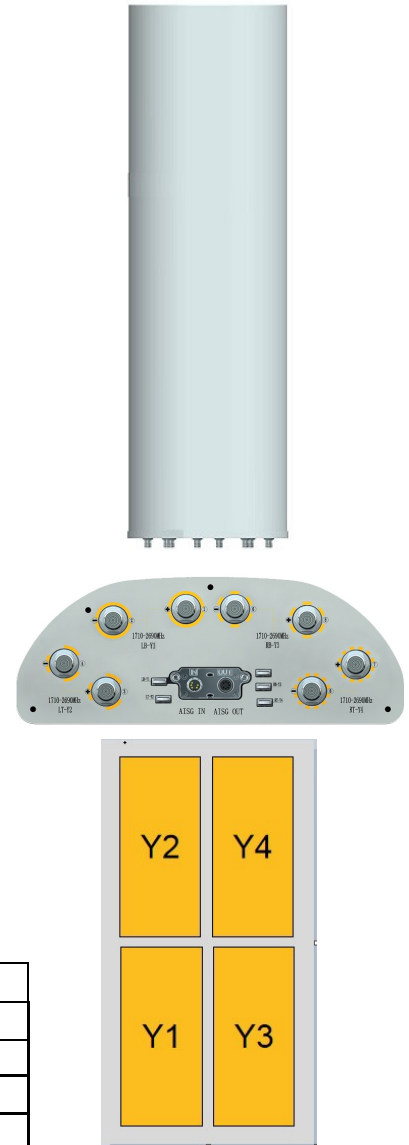
XXXXPol 1710~2690MHz×4 Dual-beam 33° 19.4dBi 2°~12° Integrated RCU (Remote Control Unit) Antenna

| Electrical Specifications | | | | |
|---------------------------------------------------------------|-----------|-----------|-----------|-----------|
| Frequency range (MHz) | 1710~2690 | | | |
| | 1710~1990 | 1920~2200 | 2200~2490 | 2490~2690 |
| Polarization | ±45° | | | |
| Gain over all tilts (dBi) (Bottom) | 18.3±0.5 | 18.6±0.3 | 19.1±0.3 | 19.4±0.3 |
| Gain over all tilts (dBi) (Top) | 17.8±0.5 | 18.1±0.3 | 18.7±0.3 | 19.1±0.3 |
| Horizontal beam centers (°) | ±28 | ±28 | ±28 | ±28 |
| Horizontal 3dB beamwidth (°) | 39±1.5 | 38±1 | 36±1 | 32±1 |
| Vertical 3dB beamwidth (°) | 9.0±0.4 | 8.1±0.3 | 7.2±0.3 | 6.5±0.3 |
| Front to back ratio (dB) Total power, ±30° | >25 | >25 | >26 | >26 |
| Cross polar ratio (dB) (at Boresight) | >19 | >19 | >19 | >19 |
| Electrical downtilt (°) | 2-12 | | | |
| Sidelobe suppression (dB) (First sidelobe above main beam) | >17 | >17 | >17 | >17 |
| VSWR | ≤1.5 | | | |
| Cross Polar Isolation/Intra-Cluster isolation (dB) | ≥25 | | | |
| Inter-band Isolation/Inter-Cluster isolation (dB) | ≥30 | | | |
| Isolation beam to beam (dB) | ≥25 | | | |
| Efficiency | ≥65% | | | |
| Intermodulation IM3 (2×43dBm carrier) | ≤-153 dBc | | | |
| Impedance (Ω) | 50 | | | |
| Max. power per input (W) @50°C | 200 | | | |
| Lightning protection | Dc Ground | | | |

*Values calculated according to NGMN BASTA v11.1 requirement.

| Mechanical Specifications | |
|---------------------------------------------------|--------------------------|
| Connector | 8×4.3-10-Female |
| Connector position | Bottom |
| Height × width × depth (mm) | 2095×400×150 |
| Packing size (mm) | 2435×490×265 |
| Antenna weight (kg) | 26.5 |
| Installation kit weight (kg) | 5.4 |
| Packing weight (kg) | 37 |
| Wind load (N, at 150km/h) Frontal/Lateral/Rear | 917/249/974 |
| Max. wind velocity (km/h) | 216 |
| Radome material | Fiberglass, UV Resistant |
| Radome color | Gray or Color Customized |
| Mechanical tilt (°) | 0~10 |
| Operating temperature (°C) | -50~65 |
| Mounting hardware (mm) | Φ50~Φ115 |

| Integrated RET Properties | |
|---------------------------------|-------------------------------------------------------------------------------------------------------------------------------------------------------------------------------------------|
| RET model | TRCU-TQ10P2V01 |
| RET type | Integrated (Replaceable) |
| RET protocol | AISG 2.0/3GPP |
| Daisy chain connection solution | Ready for daisy-chaining/cascade |
| Power supply(V) | 10-30 DC |
| Power consumption(W) | ≤0.6 (Idle,12V),≤6 (In motion,12V) |
| Adjustment time (Full Range) | <4Mins |
| Adjustment cycles | >50,000 |
| Temperature range (°C) | -40~65 |
| Lightning protection | 3KA(8/20μs) @ Pin5 & Pin3; 5KA(8/20μs) @ Pin1 / Pin6 & Pin7 |
| Connectors | 2×8 Pin circle connector according to IEC 60130-9 and AISG. Daisy chain in:Male,Daisy chain out:Female Pin1:12V;Pin3:RS485B;Pin5:RS485A;Pin6:10-30V; Pin7:GND;Pin2&Pin4&Pin8:N/C |



1710~2690MHz

| Ant Array | Freq(MHz) | Conns | Beams | RET Unique ID |
|-----------|-----------|-------|-------|----------------|
| Y1 | 1710-2690 | 2 | 2 | TY00000.....Y1 |
| Y2 | 1710-2690 | 2 | | TY00000.....Y2 |
| Y3 | 1710-2690 | 2 | | TY00000.....Y3 |
| Y4 | 1710-2690 | 2 | | TY00000.....Y4 |

View Front Side of antenna

Compliance

-Certified quality assurance system and environmental management system of company:

EN ISO9001, EN ISO 14001, OHSAS 18001, ETSI EN300019-1-1 Class 1.2

ETSI EN300019-1-2 Class 2.3 ETSI EN300019-1-4 Class 4.1;

-Environmentally regulations: ROHS, REACH;

-Comply with CE certification;