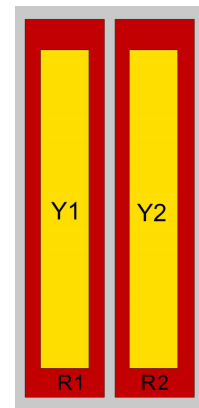
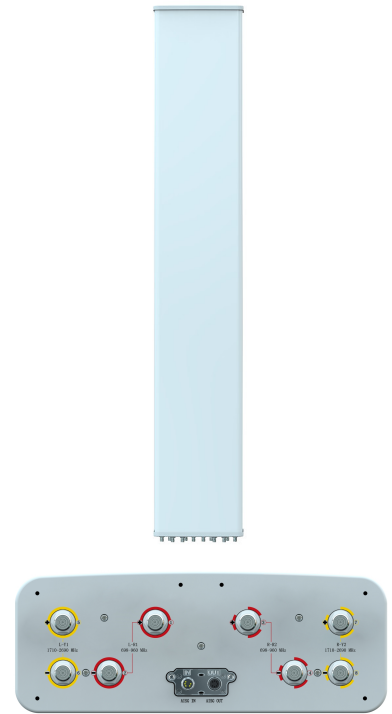


XXXXPol 698~960MHz×2/1710~2690MHz×2 65°/65° 16.1/18.5dBi 2°~12°/2°~12° Integrated and replaceable RCU (Remote Control Unit) Antenna

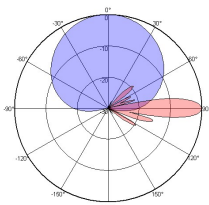
| Electrical Specifications | | | | |
|---|-------------------------------------|----------|----------|----------|
| Frequency range (MHz) | R1/R2-698~960 | | | |
| | 698~806 | 790~862 | 824~894 | 880~960 |
| Polarization | ±45° | | | |
| Gain at mid tilt (dBi) | 15.0 | 15.5 | 15.8 | 16.1 |
| Gain over all tilts (dBi) | 14.8±0.6 | 15.3±0.6 | 15.6±0.3 | 15.9±0.6 |
| Horizontal 3dB beamwidth (°) | 68±5 | 65±4 | 64±4 | 63±5 |
| Vertical 3dB beamwidth (°) | 11.3±0.8 | 10.4±0.6 | 9.9±0.7 | 9.2±0.7 |
| Front to back ratio (dB) Total power, ±30° | >23 | >24 | >26 | >26 |
| Cross polar ratio (dB) (at Boresight) | >18 | >20 | >21 | >20 |
| Electrical downtilt (°) | 2~12 | | | |
| Sidelobe suppression (dB) (First sidelobe above main beam) | >16 | >16 | >16 | >16 |
| VSWR | <1.5 | | | |
| Isolation: intra-system (dB) | ≥25 | | | |
| Isolation: inter-system (dB) | R1//R2 ≥ 25 R1, R2//(Y1,Y2) ≥ 28 | | | |
| Intermodulation IM3 (2×43dBm carrier) | ≤-153dBc | | | |
| Impedance (Ω) | 50 | | | |
| Max. power per input (W) @50°C | 500 | | | |

| Electrical Specifications | | | | |
|---|------------------|-----------|-----------|-----------|
| Frequency Range (MHz) | Y1/Y2 -1710-2690 | | | |
| | 1710~1920 | 1920~2200 | 2200~2490 | 2490~2690 |
| Polarization | ±45° | | | |
| Gain at mid tilt (dBi) | 17.5 | 18.0 | 18.1 | 18.5 |
| Gain over all tilts (dBi) | 17.4±0.5 | 17.8±0.5 | 17.9±0.6 | 18.4±0.5 |
| Horizontal 3dB beamwidth (°) | 68±5 | 65±5 | 64±6 | 60±6 |
| Vertical 3dB beamwidth (°) | 6.9±0.6 | 6.1±0.6 | 5.5±0.5 | 5.5±0.5 |
| Front to back ratio (dB) Total power, ±30° | >26 | >26 | >27 | >26 |
| Cross polar ratio (dB) (at Boresight) | >18 | >20 | >19 | >18 |
| Electrical downtilt (°) | 2~12 | | | |
| Sidelobe suppression (dB) (First sidelobe above main beam) | >17 | >17 | >17 | >16 |
| VSWR | <1.5 | | | |
| Isolation: intra-system (dB) | ≥25 | | | |
| Isolation: inter-system (dB) | ≥28 | | | |
| Intermodulation IM3 (2×43dBm carrier) | ≤-153dBc | | | |
| Impedance (Ω) | 50 | | | |
| Max. power per input (W) @50°C | 250 | | | |
| Lightning protection | Dc Ground | | | |

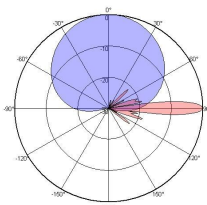
| Mechanical Specifications | |
|---|---|
| Connector | 8×4.3-10 Female |
| Connector position | Bottom |
| Height × width × depth (mm) | 1999×446×165 |
| Packing size (mm) | 2290×510×215 |
| Antenna weight (kg) | 30.5 |
| Installation kit weight (kg) | 5.5 |
| Packing weight (kg) | 43.2 |
| Wind load (N,at 150km/h) Frontal/Lateral/Maximum | 705/190/650 |
| Max. wind velocity (km/h) | 250 |
| Radome material | Fiberglass |
| Radome color | Gray |
| Mechanical tilt (°) | 0~10 |
| Operating temperature (°C) | -50~65 |
| Mounting hardware (mm) | φ50~ φ115 |
| Integrated RET Properties | |
| RET model | TRCU-TQ10P2V01 (Replaceable, Included) |
| RET type | Integrated (Replaceable) |
| RET protocol | AISG 2.0 SRET |
| Power supply(V) | 10-30 DC |
| Power consumption(W) | ≤0.6 (Idle, 12V), ≤6 (In motion, 12V) |
| Adjustment time (Full Range) | <4Mins |
| Adjustment cycles | >50,000 |
| Temperature range (°C) | -40~65 |
| Lightning protection | 3KA(8/20μs) @ Pin5 & Pin3; 5KA(8/20μs) @ Pin1 / Pin6 & Pin7 |
| Connectors | 2×8 Pin circle connector according to IEC 60130-9 and AISG. Daisy chain in:Male,Daisy chain out:Female Pin1:12V;Pin3:RS485B;Pin5:RS485A;Pin6:10-30V; Pin7:GND;Pin2&Pin4&Pin8:N/C |



| Ant Array | RET Unique ID |
|-----------|----------------|
| R1 | TY00000.....R1 |
| R2 | TY00000.....R2 |
| Y1 | TY00000.....Y1 |
| Y2 | TY00000.....Y2 |



698~960MHz



1710-2690MHz