




# Installation Guide

(Item: TTS-172718DEI-65FT2)

**Note: Only qualified personnel are allowed to install the antenna. Before the installation please use HCU confirm the system can working smoothly.**

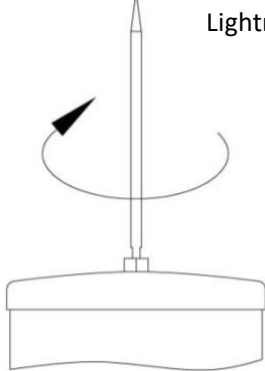
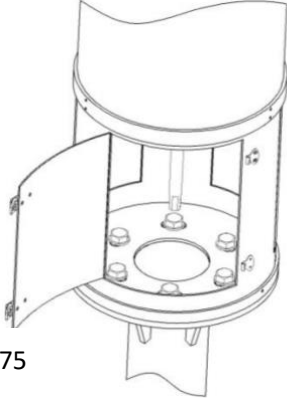
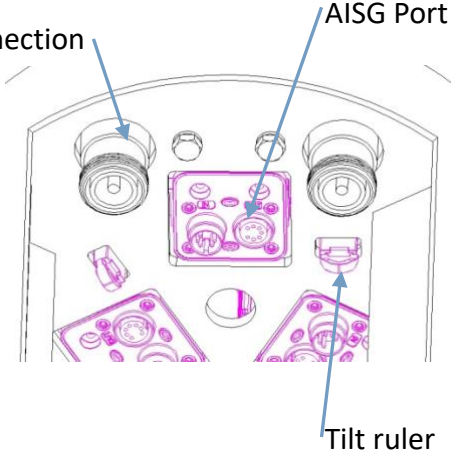
## 1.

Item	Name	Qty	Purpose	Pic
1	26mm Monkey wrench	2 pcs	Tighten the bolt and Antenna connector	
2	Tape	1 pc	Measure the Antenna location during installation	
3	Compass	1 pc	Measure the coverage direction	

## 2. Packing list

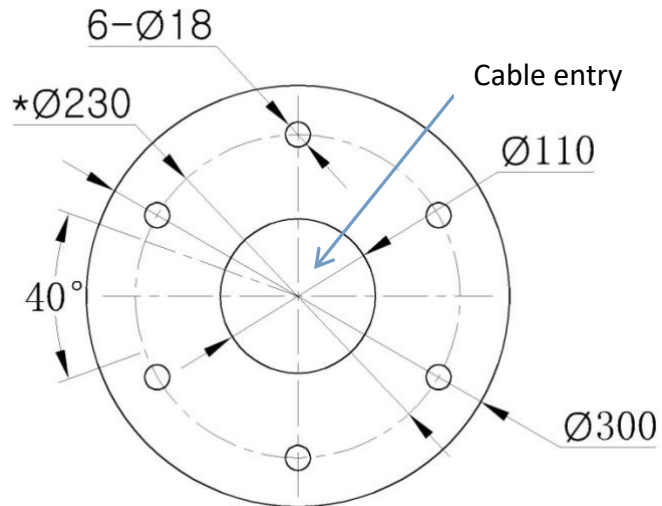
Item	Name	Qty	Notice	Remark
1	Bunch antenna	1 pc	Be careful when taking the antenna out of wrapper and keep antenna upright	
2	M16x75 bolt	6 sets	Put in plastic bag and keep in the antenna packing case.	
3	Installation guide and datasheet	1 set	Put in plastic bag and keep in the antenna packing case.	
4	lightning rod	1 pcs	Put in plastic bag and keep in the antenna packing case.	

### 3. Installation

Installation step	Installation method	Installation working scheme	Remark
1	Install the lightning rod to the top of antenna and tighten the screws	 <p>Lightning rod</p>	
2	Open the security door, tighten the antenna and pole flange with crew M16X75.	 <p>6-M16×75 bolt</p>	
3	Connect all the feeders, RCU and RCU cable(RCU is an optional component). Then entangle the connector with mackintosh.	 <p>connection</p> <p>AISG Port</p> <p>Tilt ruler</p>	

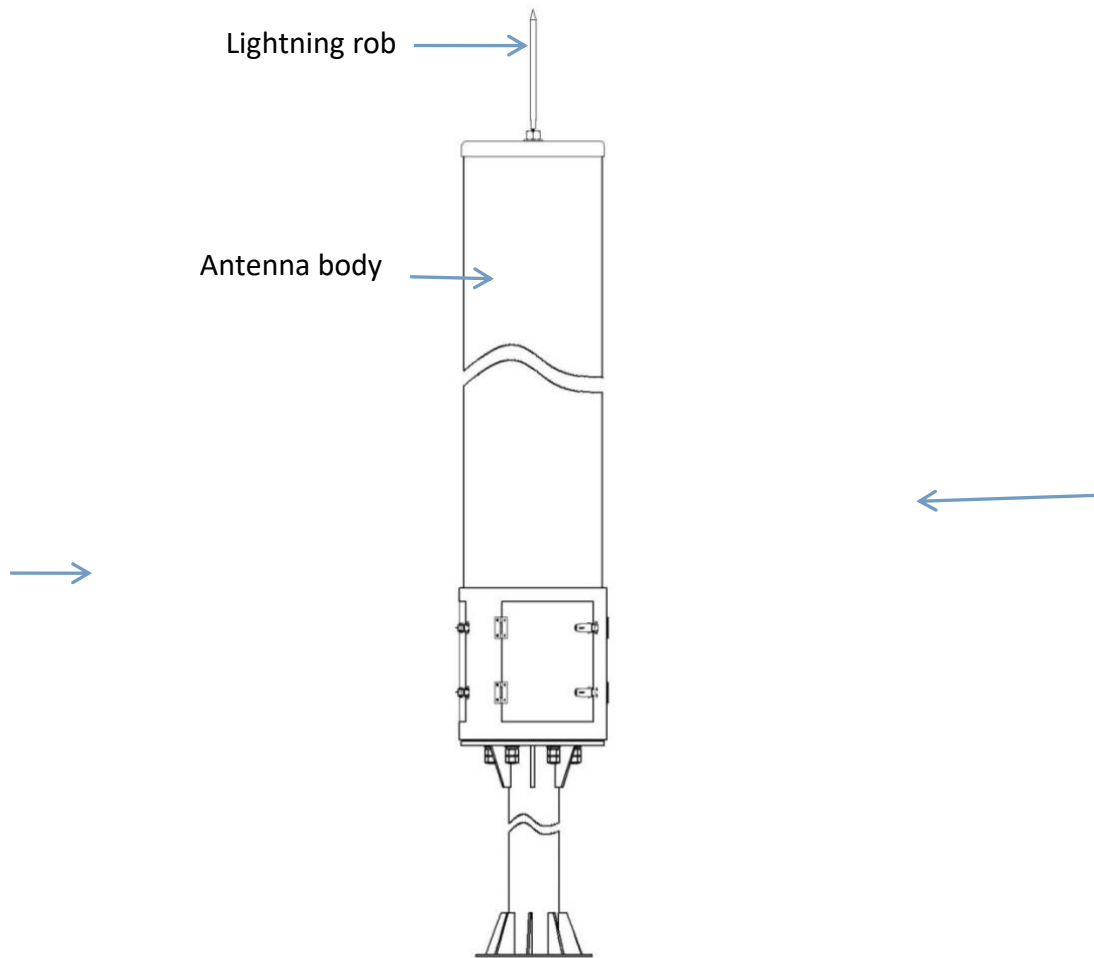
4	Recover the maintenance door, finish installation.		
---	--	--	--

#### 4. Diagrammatic drawing of flange on top of installation pole

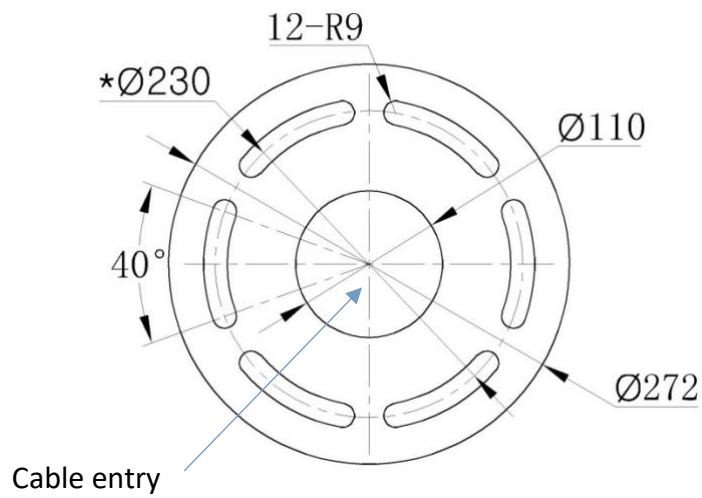


Remark: Installation pole will not included in the shipping list, the above dimensions only for reference when making the installation pole. ( $\text{Ø}110$  mm for the threading hole, minimum value is  $\text{Ø}110$  mm)

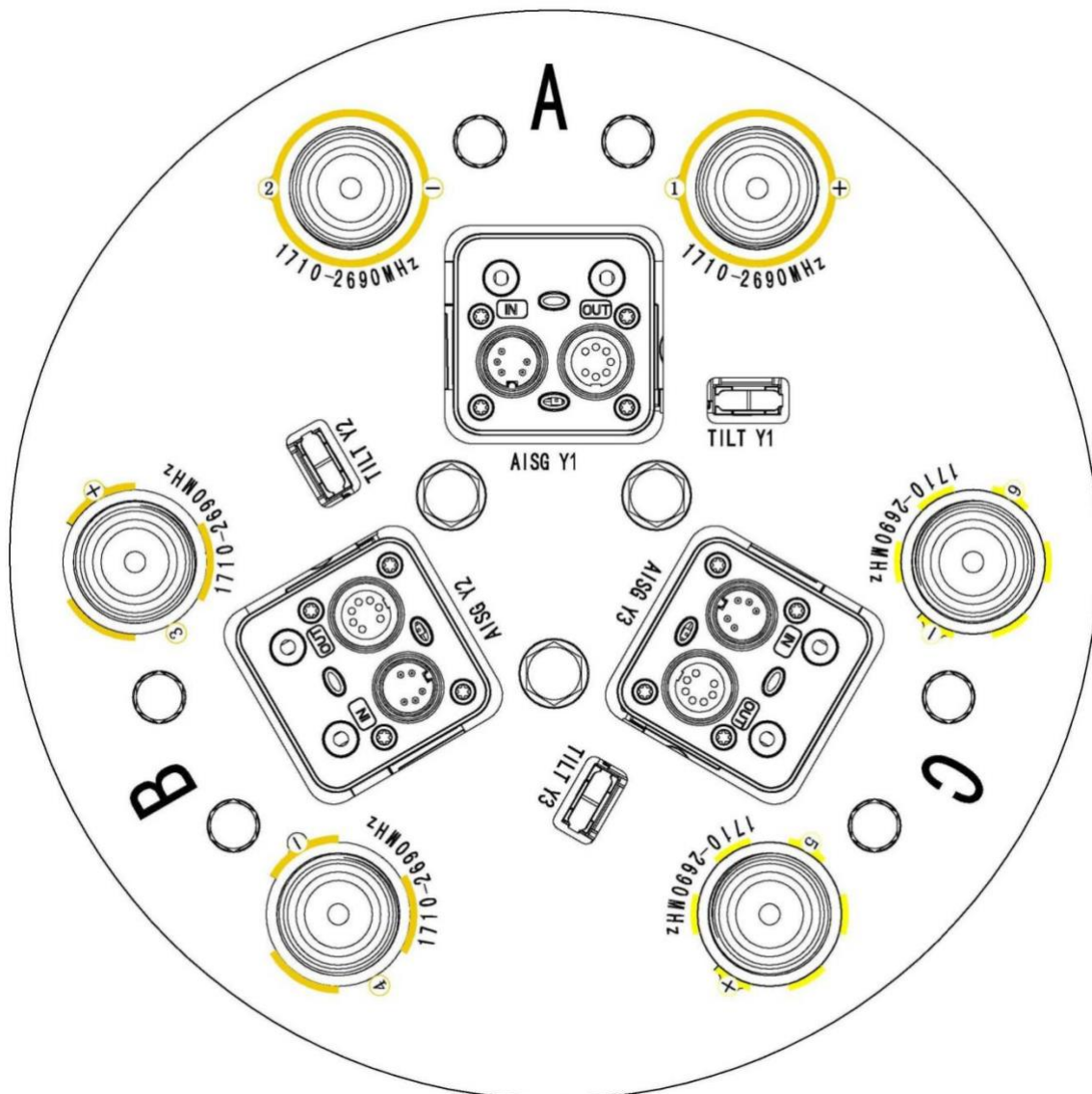
## 5. Diagrammatic drawing of the product



## 6. The size of antenna flange



## 7. connector schematic



## 8. Notice

- (1). The installation location should be chosen in a safety place far away from high voltage .
- (2). The installation of antenna should be avoid bad weather like raining/snowing/windy.
- (3). Make sure HCU can connect to antenna and works smoothly before installation.

- (4). Installation engineer must with safety belt while work high above the ground and should also with qualification certificate.
- (5). Attention to pedestrians and related personnel safety while installation, prevent falling tools or materials, set up installation safety net if necessary.
- (6). Make sure of safety for larger device while hoisting/transportation/Assembling/De-Assembling/deposit.
- (7). Make sure the pole is safety before installation, and fasten the screw during installation.
- (8). The cable must be through outlet holes, its forbidden to though protective pipe.