

Antenna (69AA) Installation Guide

天线(69AA)安装说明

Issue: 02
文档版本: 02



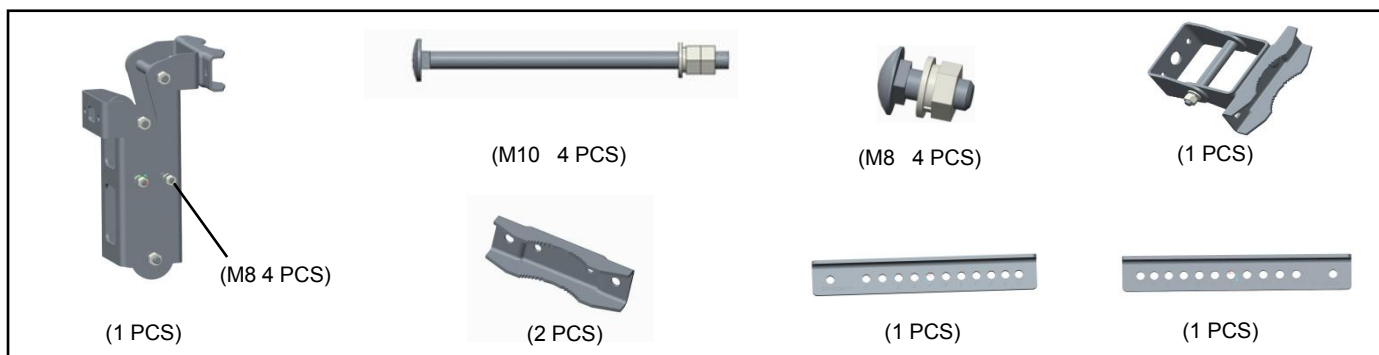
NOTE/说明

1, Only qualified personnel are allowed to install the antenna.
1, 天线的安装需由合格的安装人员操作。

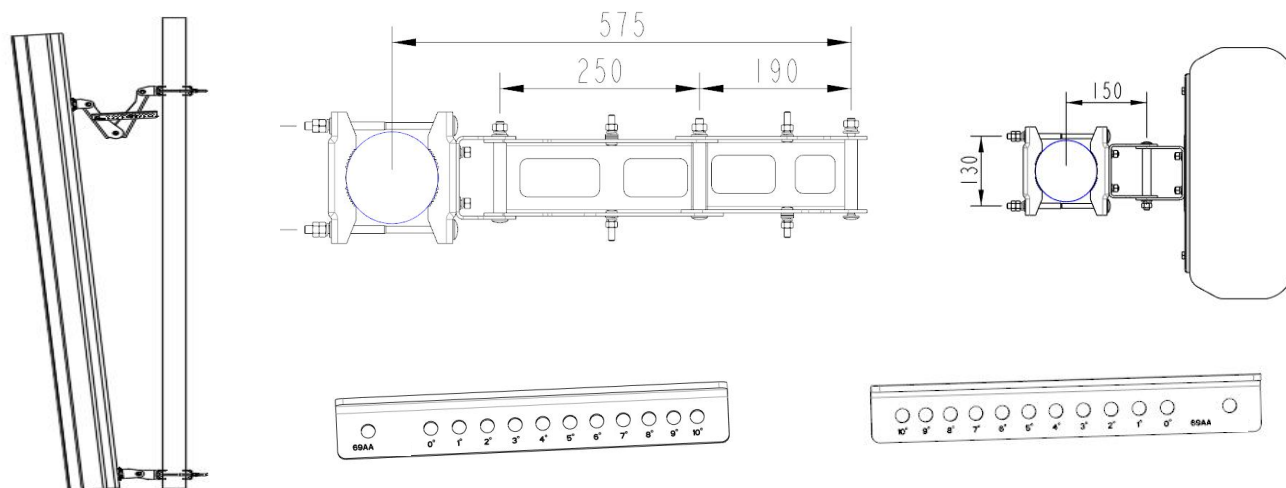
2, Appearance of the actual antenna may differ from the pictures.
2, 部分图示与实物可能稍有差别，具体情况请以实物为准。

Bracket Subassembly

支架组件



Mounting bracket	
Installation Kit Weight 安装支架重量	7.3 kg
Installation Kit Material 安装支架材料	Hot-dip galvanized steel Q235 热浸锌Q235
All screws and nuts 螺母螺丝材质	Steel(galvanization) 钢镀锌
Suitable diameter of pole 适用抱杆直径	50mm-115mm



Antenna (69AA) Installation Guide

天线(69AA)安装说明

Issue: 02
文档版本: 02



Installation tools

安装工具



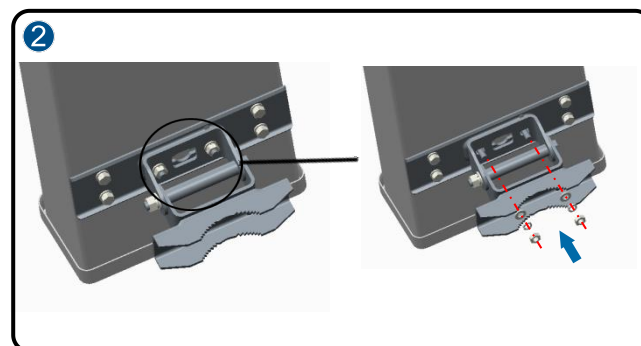
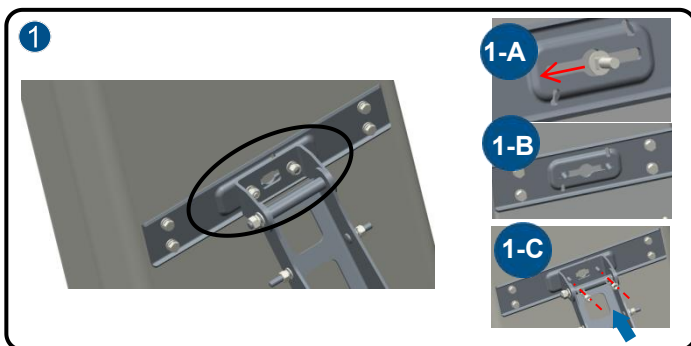
13 mm combination wrench (2 PCS)
13mm 两用扳手 (2 PCS)



16 mm combination wrench (2 PCS)
16mm 两用扳手 (2 PCS)

1 Install the bracket

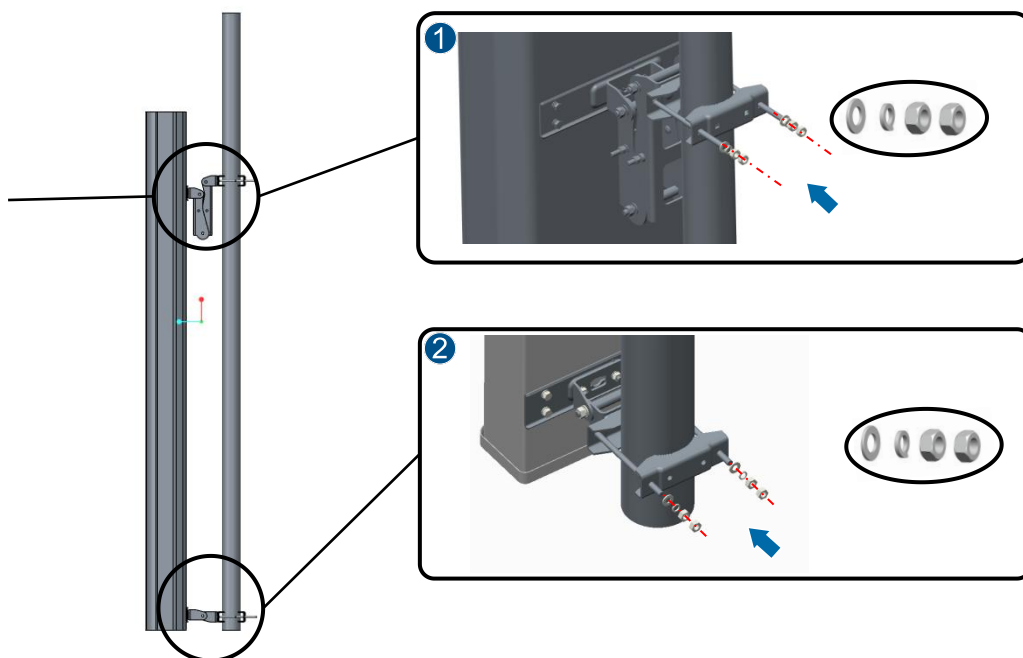
安装支架



2 Install the antenna

安装天线

Ensure the upper bracket is fully closed before the bolts are screwed tightly.
在拧紧抱杆螺丝之前确保上安装臂完全折起。



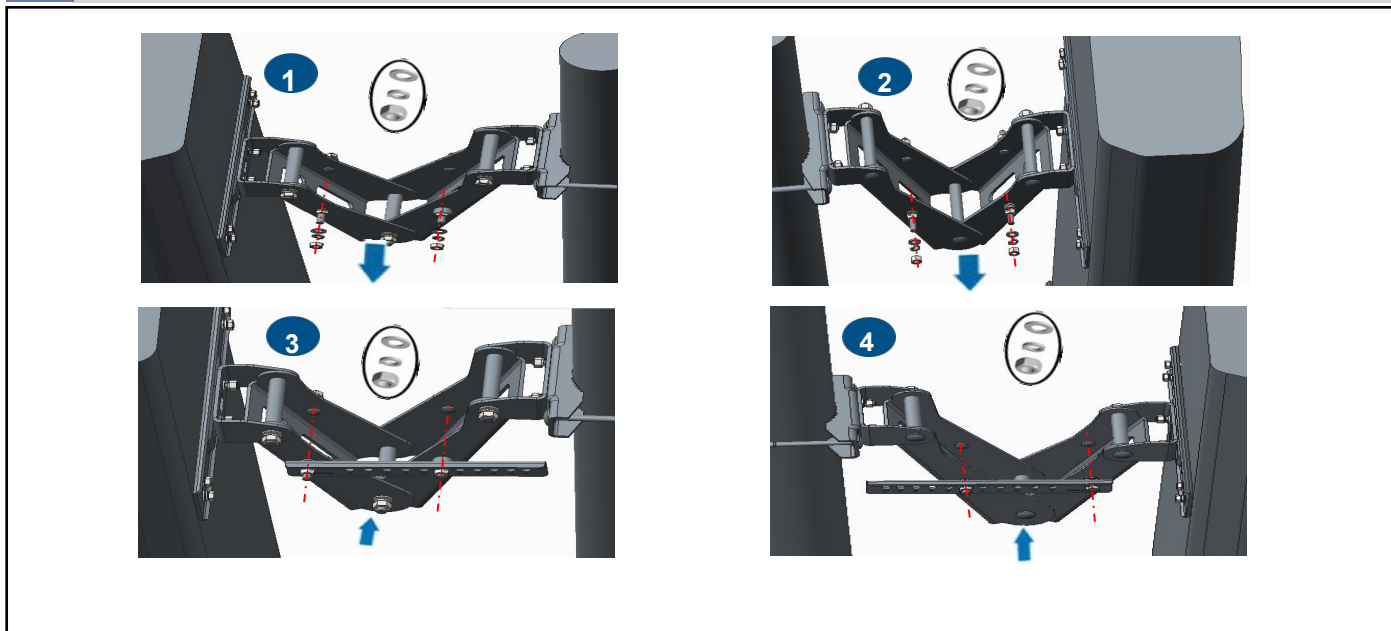
Antenna (69AA) Installation Guide

天线(69AA)安装说明

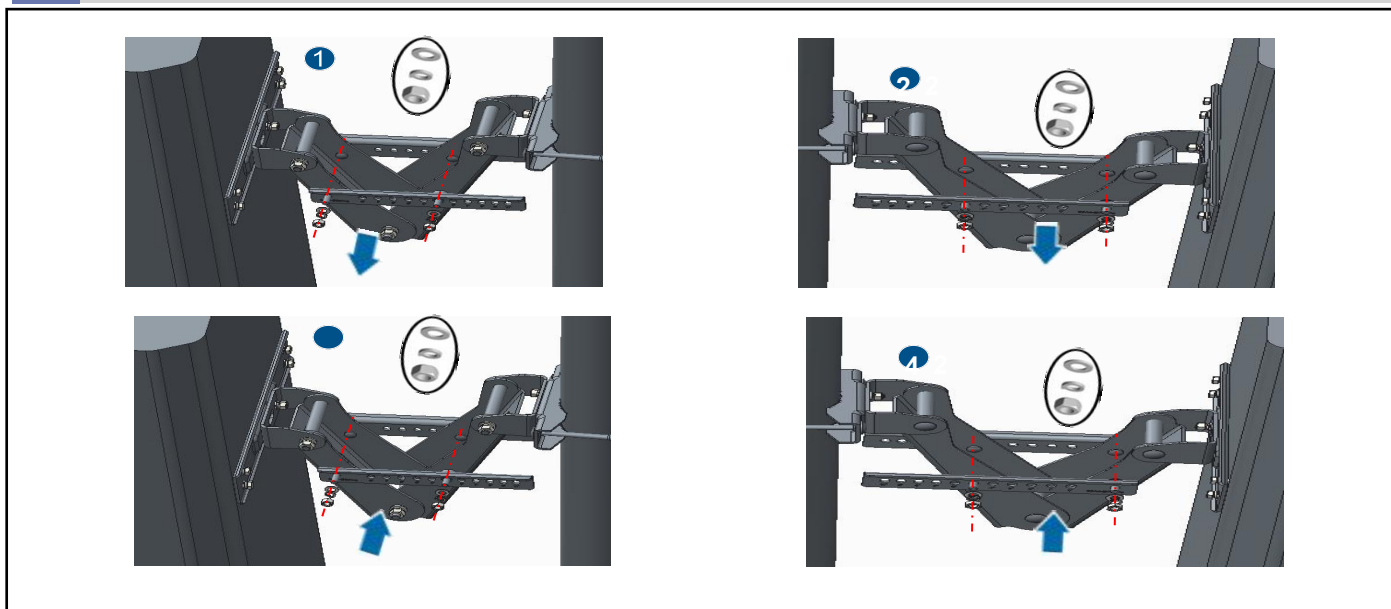


Issue: 02
文档版本: 02

3 Install the Scale 刻度片安装



4 Adjust the mechanical downtilt angle 调节机械下倾角



Antenna (69AA) Installation Guide

天线(69AA)安装说明



Issue: 02
文档版本: 02

5



Scale (the specific scale must be in line with the object)

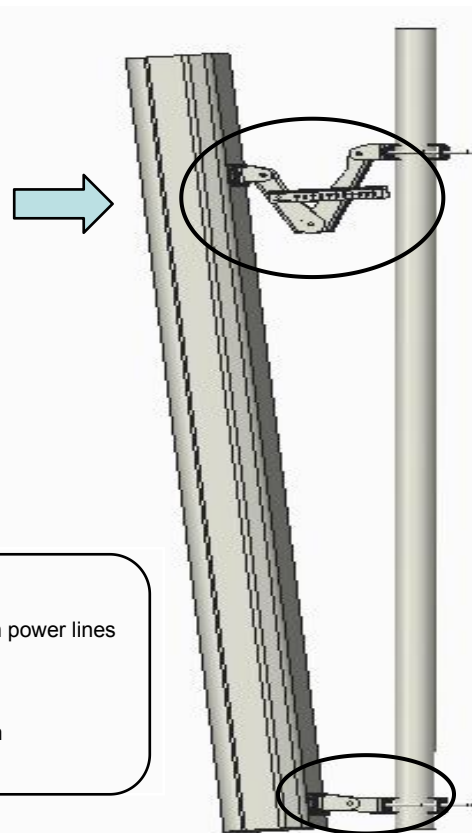
刻度片 (具体刻度
请以实物为准)

Table 1/表 1

Finally, tighten all the nuts.
Recommended torque see Table 1.

最后拧紧所有螺母。参考扭矩如表1所示。

Screws size/螺钉尺寸	Torque/力矩
M8	18 Nm
M10	38 Nm



Note/注意:

Make sure the antenna is installed in a safe and suitable location and well clear away from high power lines

天线安装时, 要选择一个远离高压的安全点进行安装

Do not attempt to carry out installation when it is raining, snowing or during stormy weather

严禁在下雨、下雪或刮大风等天气恶劣的时候安装天线

Do not attempt to install the antenna on a pole of diameter other than the specified 50~115mm

选择合适的抱杆, 严禁使用直径为50~115mm之外的抱杆