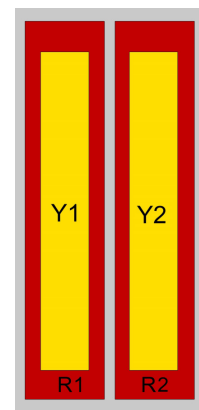
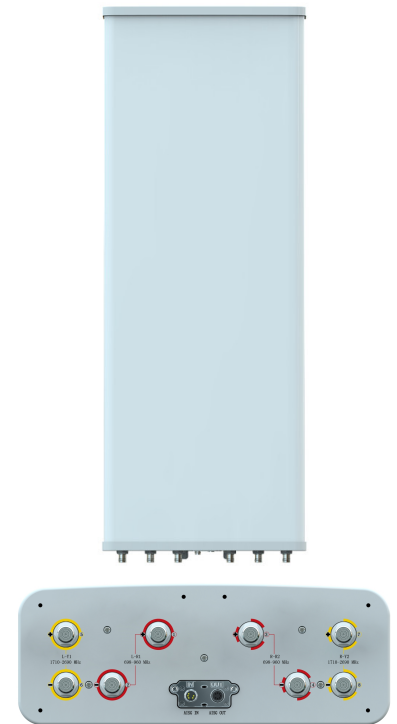


XXXXPol 698~960MHz×2/1710~2690MHz×2 65°/65° 16/18dBi 2°~12°/2°~12° Integrated and replaceable RCU (Remote Control Unit) Antenna

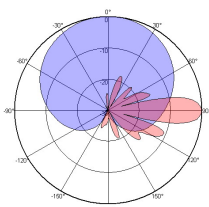
Electrical Specifications				
Frequency range (MHz)	R1/R2-698~960			
	698~806	790~862	824~894	880~960
Polarization	±45°			
Gain at mid tilt (dBi)	15.0	15.5	15.8	16.0
Gain over all tilts (dBi)	14.8±0.6	15.3±0.6	15.6±0.3	15.8±0.6
Horizontal 3dB beamwidth (°)	69±5	66±5	64±4	62±4
Vertical 3dB beamwidth (°)	11±0.8	10.2±0.7	9.5±0.6	9±0.7
Front to back ratio (dB) Total power, ±30°	>22	>23	>24	>25
Cross polar ratio (dB) (at Boresight)	>17	>20	>21	>20
Electrical downtilt (°)	2~12			
Sidelobe suppression (dB) (First sidelobe above main beam)	>16	>16	>16	>16
VSWR	<1.5			
Isolation: intra-system (dB)	≥27			
Isolation: inter-system (dB)	R1//R2 ≥ 25 R1,R2//(Y1,Y2) ≥ 28			
Intermodulation IM3 (2×43dBm carrier)	≤-153 dBc			
Impedance (Ω)	50			
Max. power per input (W) @50°C	400			
Lightning protection	Dc Ground			

Electrical Specifications				
Frequency Range (MHz)	Y1/Y2 -1710-2690			
	1710~1920	1920~2200	2200~2490	2490~2690
Polarization	±45°			
Gain at mid tilt (dBi)	16.9	17.3	17.8	18.0
Gain over all tilts (dBi)	16.7±0.5	17.1±0.5	17.5±0.5	17.8±0.5
Horizontal 3dB beamwidth (°)	68±6	66±5	64±5	59±5
Vertical 3dB beamwidth (°)	6.5±0.4	5.4±0.5	4.7±0.4	4.3±0.4
Front to back ratio (dB) Total power, ±30°	>25	>25	>25	>25
Cross polar ratio (dB) (at Boresight)	>17	>18	>17	>16
Electrical downtilt (°)	2~12			
Sidelobe suppression (dB) (First sidelobe above main beam)	>16	>16	>16	>16
VSWR	<1.5			
Isolation: intra-system (dB)	≥25			
Isolation: inter-system (dB)	≥28			
Intermodulation IM3 (2×43dBm carrier)	≤-153 dBc			
Impedance (Ω)	50			
Max. power per input (W) @50°C	200			
Lightning protection	Dc Ground			

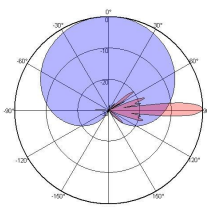
Mechanical Specifications	
Connector	8×4.3-10 Female
Connector position	Bottom
Height × width × depth (mm)	2080×446×165
Packing size (mm)	2370×510×215
Antenna weight (kg)	30.6
Installation kit weight (kg)	5.5
Packing weight (kg)	43.4
Wind load (N,at 150km/h) Frontal/Lateral/Maximum	1065/278/1190
Max. wind velocity (km/h)	216
Radome material	Fiberglass
Radome color	Gray
Mechanical tilt (°)	0~10
Operating temperature (°C)	-50~65
Mounting hardware (mm)	Φ50~Φ115
Integrated RET Properties	
RET model	TRCU-TQ10P2V01
RET type	Integrated (Replaceable)
RET protocol	AISG 2.0/3GPP
Power supply(V)	10-30 DC
Power consumption(W)	≤0.6 (Idle, 12V), ≤6 (In motion, 12V)
Adjustment time (Full Range)	<4Mins
Adjustment cycles	>50,000
Temperature range (°C)	-40~65
Lightning protection	3KA(8/20μs) @ Pin5 & Pin3; 5KA(8/20μs) @ Pin1 / Pin6 & Pin7
Connectors	2×8 Pin circle connector according to IEC 60130-9 and AISG. Daisy chain in:Male,Daisy chain out:Female Pin1:12V;Pin3:RS485B;Pin5:RS485A;Pin6:10-30V; Pin7:GND;Pin2&Pin4&Pin8:N/C



Ant Array	RET Unique ID
R1	TY00000.....R1
R2	TY00000.....R2
Y1	TY00000.....Y1
Y2	TY00000.....Y2



698~960 MHz



1710~2690 MHz