

XXXXPol 690~960MHz×2/1710~2690MHz×2 33°/33° 16.5/18.5dBi 2°~12°/2°~12° Integrated and replaceable RCU (Remote Control Unit) Antenna

Electrical Specifications				
Frequency range (MHz)	690~960×2			
	690~803	790~802	824~894	880~960
Polarization	±45°			
Gain at mid tilt (dBi) (Bottom)	15.7	16.2	16.3	16.5
Gain over all tilts (dBi) (Bottom)	15.5±0.5	16±0.5	16.1±0.5	16.3±0.5
Gain at mid tilt (dBi) (Top)	15.2	15.7	15.8	16
Gain over all tilts (dBi) (Top)	15±0.5	15.5±0.5	15.6±0.5	15.8±0.5
Horizontal 3dB beamwidth (°)	36±5	32±5	30±5	28±5
Vertical 3dB beamwidth (°)	18.5±0.5	16.5±0.5	16±0.5	15±0.5
Front to back ratio (dB) Total power, ±30°	>25	>25	>25	>25
Cross polar ratio (dB) (at Boresight)	>15	>15	>15	>15
Electrical downtilt (°)	2~12			
Sidelobe suppression (dB) (First sidelobe above main beam)	>13	>14	>14	>15
VSWR	<1.5			
Isolation: intra-system (dB)	≥25			
Isolation: inter-system (dB)	≥25			
Intermodulation IM3 (2×43dBm carrier)	≤-153 dBc			
Impedance (Ω)	50			
Max. power per input (W) @50°C	400			
Lightning protection	Dc Ground			

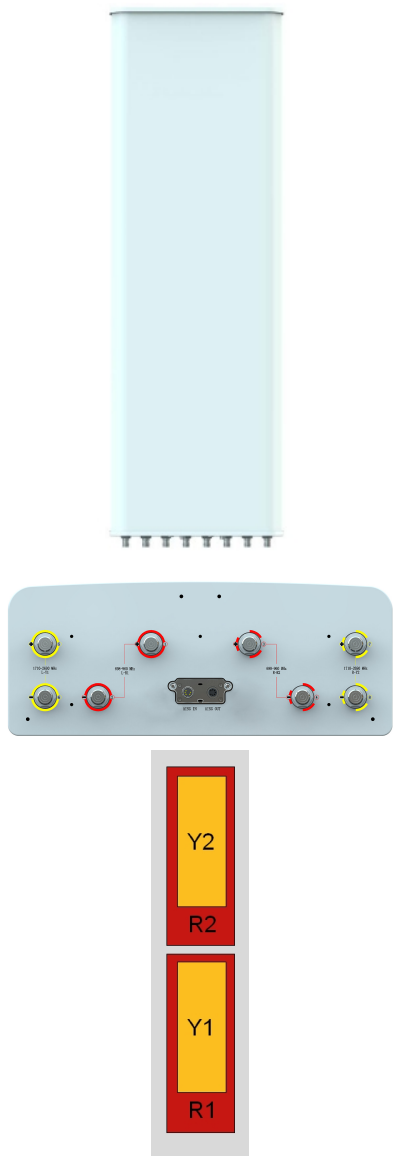
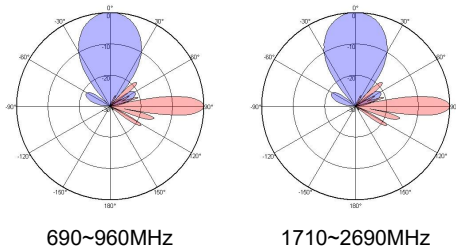
Electrical Specifications				
Frequency Range (MHz)	1710~2690×2			
	1710~1920	1920~2200	2200~2490	2490~2690
Polarization	±45°			
Gain at mid tilt (dBi) (Bottom)	18	18.2	18.4	18.5
Gain over all tilts (dBi) (Bottom)	17.8±0.5	18±0.5	18.2±0.5	18.3±0.5
Gain at mid tilt (dBi) (Top)	17.5	17.7	17.9	18
Gain over all tilts (dBi) (Top)	17.3±0.5	17.5±0.5	17.7±0.5	17.8±0.5
Horizontal 3dB beamwidth (°)	36±5	34±5	30±5	28±5
Vertical 3dB beamwidth (°)	9.5±0.5	8.8±0.5	7.3±0.5	6.6±0.5
Front to back ratio (dB) Total power, ±30°	>25	>25	>25	>25
Cross polar ratio (dB) (at Boresight)	>15	>15	>15	>15
Electrical downtilt (°)	2~12			
Sidelobe suppression (dB) (First sidelobe above main beam)	>15	>15	>15	>15
VSWR	<1.5			
Isolation: intra-system (dB)	≥25			
Isolation: inter-system (dB)	≥25			
Intermodulation IM3 (2×43dBm carrier)	≤-153 dBc			
Impedance (Ω)	50			
Max. power per input (W) @50°C	200			
Lightning protection	Dc Ground			

Mechanical Specifications

Connector	8×4.3-10-Female
Connector position	Bottom
Height × width × depth (mm)	2080×499×198
Packing size (mm)	2465×620×350
Antenna weight (kg)	42
Installation kit weight (kg)	8.6
Packing weight (kg)	56
Wind load (N,at 150km/h) Frontal/Lateral/Maximum	1074/309/1276
Max. wind velocity (km/h)	216
Radome material	Fiberglass
Radome color	Gray
Mechanical tilt (°)	0~10
Operating temperature (°C)	-50~65
Mounting hardware (mm)	Φ50~Φ115

Integrated RET Properties

RET model	TRCU-TQ10P2V01
RET type	Integrated (Replaceable)
RET protocol	AISG 2.0/3GPP
Power supply(V)	10-30 DC
Power consumption(W)	≤0.6 (Idle, 12V), ≤6 (In motion, 12V)
Adjustment time (Full Range)	<4Mins
Adjustment cycles	>50,000
Temperature range (°C)	-40~65
Lightning protection	3KA(8/20μs) @ Pin5 & Pin3; 5KA(8/20μs) @ Pin1 / Pin6 & Pin7
Connectors	2×8 Pin circle connector according to IEC 60130-9 and AISG. Daisy chain in:Male,Daisy chain out:Female Pin1:12V;Pin3:RS485B;Pin5:RS485A;Pin6:10-30V; Pin7:GND;Pin2&Pin4&Pin8:N/C


Antenna Pattern Sample For Reference


Ant Array	RET Unique ID
R1	TY00000.....R1
R2	TY00000.....R2
Y1	TY00000.....Y1
Y2	TY00000.....Y2