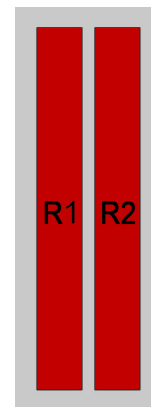
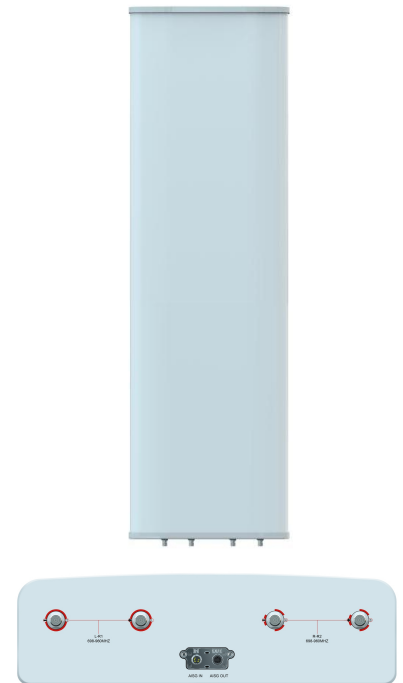


XXPoI 698~960MHz×2 33° 18.2dBi 0°~8° Integrated and replaceable RCU (Remote Control Unit) Antenna

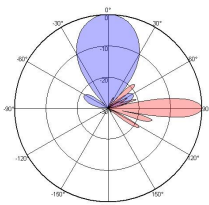
Electrical Specifications				
Frequency range (MHz)	698~960×2			
	698~803	790~862	824~894	880~960
Polarization	±45°			
Gain at mid tilt (dBi)	17.0	17.3	17.8	18.2
Gain over all tilts (dBi)	16.9±0.4	17.1±0.4	17.6±0.4	18.0±0.4
Horizontal 3dB beamwidth (°)	48±6	46±6	42±5	37±3
Vertical 3dB beamwidth (°)	8.2±0.8	7.4±0.5	7.1±0.5	6.7±0.5
Front to back ratio (dB) Total power, ±30°	>27	>28	>28	>28
Cross polar ratio (dB) (at Boresight)	>18	>18	>17	>15
Electrical downtilt (°)	0~8			
Sidelobe suppression (dB) (First sidelobe above main beam)	>15	>15	>15	>15
VSWR	<1.5			
Isolation: intra-system (dB)	≥25			
Isolation: inter-system (dB)	≥25			
Intermodulation IM3 (2×43dBm carrier)	≤-153 dBc			
Impedance (Ω)	50			
Max. power per input (W) @50°C	500			
Lightning protection	Dc Ground			

Mechanical Specifications	
Connector	4×4.3-10-Female
Connector position	Bottom
Height × width × depth (mm)	2680×630×175
Packing size (mm)	3120×750×290
Antenna weight (kg)	46.5
Installation kit weight (kg)	8.7
Packing weight (kg)	67
Wind load (N,at 150km/h) Frontal/Lateral/Maximum	1709/638/1911
Max. wind velocity (km/h)	216
Radome material	Fiberglass
Radome color	Gray
Mechanical tilt (°)	0~8
Operating temperature (°C)	-50~65
Mounting hardware (mm)	Φ50~Φ115

Integrated RET Properties	
RET model	TRCU-TQ10P2V01
RET type	Integrated (Replaceable)
RET protocol	AISG 2.0/3GPP
Power supply(V)	10-30 DC
Power consumption(W)	≤0.6 (Idle, 12V), ≤6 (In motion, 12V)
Adjustment time (Full Range)	<4Mins
Adjustment cycles	>50,000
Temperature range (°C)	-40~65
Lightning protection	3KA(8/20μs) @ Pin5 & Pin3; 5KA(8/20μs) @ Pin1 / Pin6 & Pin7
Connectors	2×8 Pin circle connector according to IEC 60130-9 and AISG. Daisy chain in:Male,Daisy chain out:Female Pin1:12V;Pin3:RS485B;Pin5:RS485A;Pin6:10-30V; Pin7:GND;Pin2&Pin4&Pin8:N/C



Ant Array	RET Unique ID
R1	TY00000.....R1
R2	TY00000.....R2



698~960 MHz