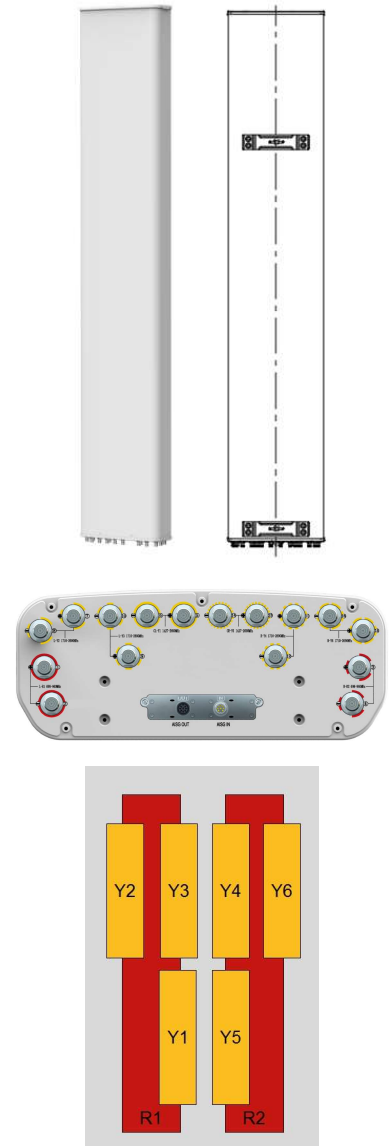
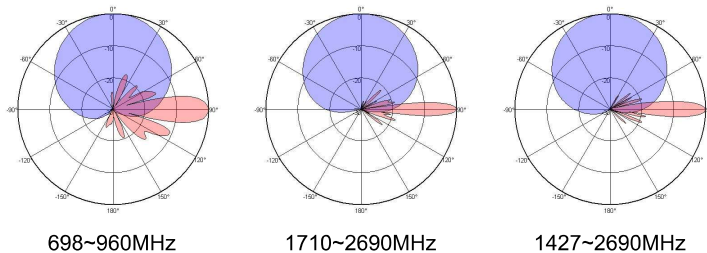


**XXXXXXXXXPoI 698~960MHz×2/1710~2690MHz×4/1427~2690MHz×2 65°/65°/65° 16.5/17.1/17.2dBi
2°~10°/2°~10°/2°~12° Integrated and replaceable RCU (Remote Control Unit) Antenna**

Electrical Specifications								
Frequency range (MHz)	R1/ R2:698~960×2				Y2/Y3/Y4/Y6:1710~2690×4			
	698~806	790~862	824~894	880~960	1710~1990	1920~2200	2200~2490	2490~2690
Polarization	±45°							
Gain at mid tilt (dBi)	15.6	16.0	16.2	16.4	16.7	17.0	17.4	17.5
Gain over all tilts (dBi)	15.5±0.5	15.9±0.5	16.1±0.5	16.3±0.6	16.6±0.5	16.8±0.6	17.2±0.6	17.4±0.5
Horizontal 3dB beamwidth (°)	65±6	64±5	63±5	62±6	67±7	64±6	61±5	60±6
Vertical 3dB beamwidth (°)	9.0±0.5	8.4±0.4	8.0±0.5	7.7±0.4	6.1±0.5	5.4±0.4	4.7±0.4	4.3±0.3
Front to back ratio (dB) Total power, ±30°	>22	>25	>25	>25	>25	>25	>25	>25
Cross polar ratio (dB) (at Boresight)	>18	>19	>20	>20	>17	>18	>17	>18
Cross polar ratio (dB) (over Sector)	>8	>8	>8	>8	>6	>4	>4	>4
Electrical downtilt (°)	2~10				2~10			
Sidelobe suppression (dB) (First sidelobe above main beam)	>15	>15	>15	>15	>15	>16	>16	>16
VSWR	<1.5				<1.5			
Isolation: intra-system (dB)	>25				>25			
Isolation: inter-system (dB)	>25				>26			
Intermodulation IM3 (2×43dBm carrier)	≤-153 dBc				≤-153 dBc			
Impedance (Ω)	50				50			
Max. power per input (W) @50°C	500				200			
Lightning protection	Dc Ground							

Electrical Specifications					
Frequency Range (MHz)	Y1/Y5: 1427~2690×2				
	1427~1518	1710~1990	1920~2200	2200~2490	2490~2690
Polarization	±45°				
Gain at mid tilt (dBi)	15.6	16.8	17.1	17.2	17.4
Gain over all tilts (dBi)	15.5±0.5	16.7±0.5	17.0±0.5	17.1±0.5	17.2±0.6
Horizontal 3dB beamwidth (°)	72±7	64±6	62±5	63±6	60±5
Vertical 3dB beamwidth (°)	8.6±0.6	6.9±0.6	6.1±0.5	5.4±0.5	4.9±0.4
Front to back ratio (dB) Total power, ±30°	>25	>25	>26	>27	>28
Cross polar ratio (dB) (at Boresight)	>16	>17	>18	>18	>20
Cross polar ratio (dB) (over Sector)	>6	>6	>4	>4	>4
Electrical downtilt (°)	2~12				
Sidelobe suppression (dB) (First sidelobe above main beam)	>15	>16	>16	>17	>17
VSWR	<1.5				
Isolation: intra-system (dB)	>23	>26	>26	>26	>26
Isolation: inter-system (dB)	>26				
Intermodulation IM3 (2×43dBm carrier)	≤-153 dBc				
Impedance (Ω)	50				
Max. power per input (W) @50°C	200				
Lightning protection	Dc Ground				

Mechanical Specifications	
Connector	16×4.3-10 Female
Connector position	Bottom
Height × width × depth (mm)	2769×499×198
Packing size (mm)	2960×565×265
Antenna weight (kg)	52.5
Installation kit weight (kg)	4.1(2 units)
Packing weight (kg)	65.3
Wind load (N,at 150km/h) Frontal/Lateral/Rearside	1020/300/1325
Max. wind velocity (km/h)	216
Radome material	GFRPP
Radome color	Gray
Operating temperature (°C)	-50~65
Mounting hardware (mm)	Φ50~Φ115
Integrated RET Properties	
RET model	TRCU-TQ20P3V01
RET type	Integrated (Replaceable)
RET protocol	AISG 2.0/3GPP
Power supply(V)	10-30 DC
Power consumption(W)	≤0.6 (Idle, 12V), ≤6 (In motion, 12V)
Adjustment time (Full Range)	< 4Mins
Adjustment cycles	> 50,000
Temperature range (°C)	-40~65
Lightning protection	3KA(8/20μs) @ Pin5 & Pin3; 5KA(8/20μs) @ Pin1 / Pin6 & Pin7
Connectors	2×8 Pin circle connector according to IEC 60130-9 and AISG. Daisy chain in:Male,Daisy chain out:Female Pin1: 12V;Pin3:RS485B;Pin5:RS485A;Pin6:10-30V; Pin7:GND;Pin2&Pin4&Pin8:N/C


Antenna Pattern Sample For Reference


Ant Array	RET Unique ID
R1	TY00000.....R1
R2	TY00000.....R2
Y1	TY00000.....Y1
Y2	TY00000.....Y2
Y3	TY00000.....Y3
Y4	TY00000.....Y4
Y5	TY00000.....Y5
Y6	TY00000.....Y6