

XXXXXXXXXPoI 694~960MHz×2/1710~2170MHz×2/2490~2690MHz×2/1427~2690MHz×2
 65°/65°/65°/65° 14.8/16.8/17.5/17.8dBi 2°~14°/2°~12°/2°~12°/2°~12° Integrated and
 replaceable RCU (Remote Control Unit) Antenna

Electrical specifications							
Frequency Range (MHz)	R1/R2 -694~960				B1/B2-1710~2170		Y2/Y3-2490~2690
	694~803	790~862	824~894	880~960	1710~1920	1920~2170	2490~2690
Polarization	±45°				±45°		±45°
Gain at mid tilt (dBi)	14.0	14.3	14.5	14.8	16.5	16.8	17.5
Gain over all tilts (dBi)	13.7±0.5	14.1±0.5	14.3±0.5	14.5±0.5	16.2±0.5	16.6±0.5	17.2±0.5
Horizontal 3dB beamwidth (°)	67±6	64±6	63±5	61±5	67±5	66±5	58±6
Vertical 3dB beamwidth (°)	16.3±1.2	14.8±0.7	14.1±0.7	13.6±0.8	7.4±0.5	6.5±0.5	4.8±0.5
Front to back ratio (dB) Total power, ±30°	>22	>23	>24	>24	>26	>26	>25
Cross polar ratio (dB) (at Boresight)	>16	>18	>18	>17	>16	>16	>16
Electrical downtilt (°)	2~14				2~12		2~12
Sidelobe suppression (dB) (First sidelobe above main beam)	>15	>16	>16	>15	>15	>15	>15
VSWR	<1.5				<1.5		<1.5
Isolation: intra-system (dB)	>25				>25		>25
Isolation: inter-system (dB)	>25(R1//R2) >28(Others)				>28		>28
Intermodulation IM3 (2×43dBm carrier)	≤-153 dBc				≤-153 dBc		≤-153 dBc
Impedance (Ω)	50						
Max. power per input (W) @50°C	400				200		200
Lightning protection	Dc Ground						

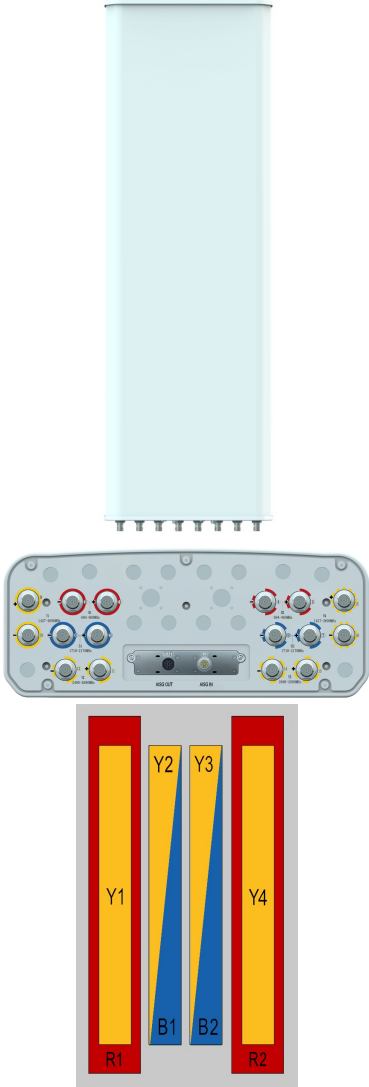
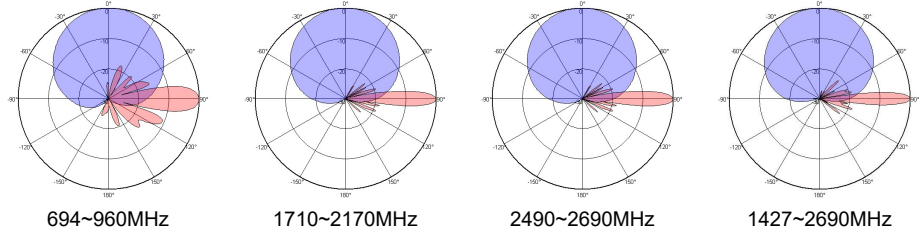
Electrical specifications					
Frequency Range (MHz)	Y1/Y4-1427~2690				
	1427~1518	1710~1990	1920~2200	2200~2490	2490~2690
Polarization	±45°				
Gain at mid tilt (dBi)	16	16.7	17.2	17.8	17.5
Gain over all tilts (dBi)	15.9±0.4	16.6±0.4	17±0.6	17.5±0.8	17.2±0.5
Horizontal 3dB beamwidth (°)	63±5	65±6	63±5	60±5	59±6
Vertical 3dB beamwidth (°)	8.3±0.5	6.6±0.6	5.9±0.5	5.4±0.4	4.8±0.4
Front to back ratio (dB) Total power, ±30°	>26	>26	>25	>24	>24
Cross polar ratio (dB) (at Boresight)	>20	>20	>20	>19	>18
Electrical downtilt (°)	2~12				
Sidelobe suppression (dB) (First sidelobe above main beam)	>16	>15	>14	>16	>15
VSWR	<1.5				
Isolation: intra-system (dB)	>25				
Isolation: inter-system (dB)	>28				
Intermodulation IM3 (2×43dBm carrier)	≤-153 dBc				
Impedance (Ω)	50				
Max. power per input (W) @50°C	200				
Lightning protection	Dc Ground				

Mechanical specifications

Connector	16×4.3-10 Female
Connector position	Bottom
Height × width × depth (mm)	1499×499×198
Packing size (mm)	1885×620×330
Antenna weight (kg)	43.5
Installation kit weight (kg)	5.4
Packing weight (kg)	55
Wind load (N,at 150km/h) Frontal/Lateral/Rearside	906/190/920
Max. wind velocity (km/h)	216
Radome material	Fiberglass
Radome color	Gray
Mechanical tilt (°)	0-15
Operating temperature (°C)	-50~65
Mounting hardware (mm)	Φ50~Φ115

Integrated RET properties

RET model	TRCU-TQ20P3V01
RET type	Integrated (Replaceable)
RET protocol	AISG 2.0/3GPP
Power supply(V)	10-30 DC
Power consumption(W)	≤0.6 (Idle,12V),≤6 (In motion,12V)
Adjustment time (Full Range)	<4Mins
Adjustment cycles	>50,000
Temperature range (°C)	-40~65
Lightning protection	3KA(8/20μs) @ Pin5 & Pin3; 5KA(8/20μs) @ Pin1 / Pin6 & Pin7
Connectors	2×8 Pin circle connector according to IEC 60130-9 and AISG. Daisy chain in:Male,Daisy chain out:Female Pin1:12V;Pin3:RS485B;Pin5:RS485A;Pin6:10-30V; Pin7:GND;Pin2&Pin4&Pin8:N/C


Antenna pattern sample for reference


Ant Array	RET Unique ID
R1	TY00000.....R1
R2	TY00000.....R2
B1	TY00000.....B1
B2	TY00000.....B2
Y1	TY00000.....Y1
Y2	TY00000.....Y2
Y3	TY00000.....Y3
Y4	TY00000.....Y4