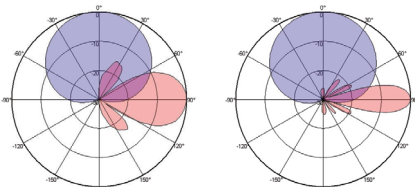
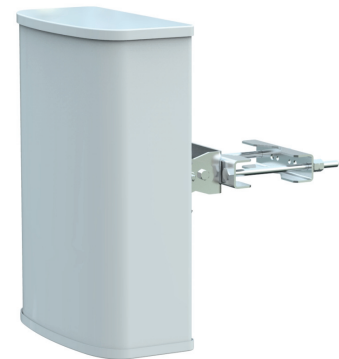


**XXPol 698~960MHz/1710~2690MHz 65°/65° 10/13dBi 0°/0° Fixed Electrical Downtilt Antenna,with Combiner Integrated**
**Electrical specifications**

| Frequency Range(MHz)                     | 698~960      |              |              | 1710~2690   |             |             |
|------------------------------------------|--------------|--------------|--------------|-------------|-------------|-------------|
|                                          | 698~803      | 790~896      | 880~960      | 1710~1920   | 1920~2200   | 2300~2690   |
| Polarization                             | ±45°         |              |              |             |             |             |
| Gain (dBi)                               | 9.5±0.3      | 9.8±0.4      | 10.7±0.2     | 12±0.5      | 12.2±0.3    | 12.8±0.5    |
| Horizontal 3dB beamwidth (°)             | 70±3         | 67±2         | 66±2         | 66±8        | 62±3        | 60±6        |
| Vertical 3dB beamwidth (°)               | 42±4         | 40±3         | 35±4         | 26±4        | 23±2        | 18±3        |
| Front-to-back ratio (dB)                 | >20          | >20          | >24          | >23         | >23         | >23         |
| Cross-polar ratio (dB)                   | >16(±60°>10) | >15(±60°>10) | >15(±60°>10) | >15(±60°>8) | >15(±60°>8) | >16(±60°>7) |
| Electrical downtilt (°)                  | 0            |              |              | 0           |             |             |
| VSWR                                     | <1.8         |              |              | <1.8        |             |             |
| Isolation: intra-system (dB)             | ≥21          |              |              | ≥21         |             |             |
| Intermodulation IM3<br>(2×43dBm carrier) | ≤-150dBc     |              |              | ≤-150 dBc   |             |             |
| Impedance (Ω)                            | 50           |              |              |             |             |             |
| Max. power per input (W) @50°C           | 150          |              |              | 150         |             |             |
| Lightning protection                     | Dc Ground    |              |              |             |             |             |

**Mechanical specifications**

|                              |                 |
|------------------------------|-----------------|
| Connector                    | 2×4.3-10-Female |
| Connector position           | Bottom          |
| Height×width×depth (mm)      | 453×300×146     |
| Packing size (mm)            | 706×395×280     |
| Antenna weight (kg)          | 5.5             |
| Installation kit weight (kg) | 2.0             |
| Packing weight (kg)          | 9.0             |
| Max. wind velocity (km/h)    | 216             |
| Radome material              | Fiberglass      |
| Radome color                 | Gray            |
| Operating temperature (°C)   | -50~65          |
| Mounting hardware (mm)       | Φ50~Φ115        |



698~960MHz

1710~2690MHz

