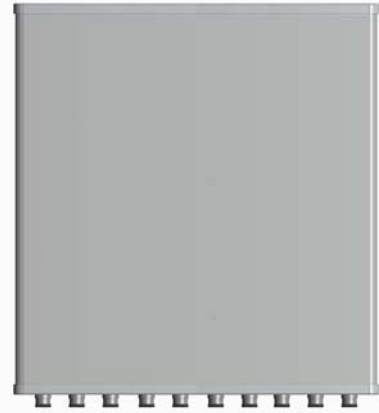


XXXXXPo1 1710~2170MHz×5 Multi Beam 12° 23dBi Fixed Electrical Downtilt Antenna

Electrical specifications			
Frequency Range(MHz)	1710~1880	1880~1920	1920~2170
Polarization	±45°		
Gain (dBi)	0°Beam:21.9	0°Beam:22	0°Beam:22.6
Horizontal 3dB beamwidth (°)	±40°	±40°	±40°
	Beam:16±1.0	Beam:14±0.4	Beam:13±1.4
	±20°	±20°	±20°
	Beam:13±0.6 0°Beam:12±0.4	Beam:12±0.2 0°Beam:11±0.1	Beam:11±0.7 0°Beam:10±0.4
Vertical 3dB beamwidth (°)	11.7±0.6	11.0±0.3	10.4±0.9
Front-to-back ratio (dB)	>29	>29	>30
Beam isolation(dB)	>16		
Cross-polar ratio (dB)	≥15(Main direction)		
Electrical downtilt (°)	6		
Sidelobe suppression (dB) (First sidelobe above main beam)	> 20	> 22	> 15
VSWR	<1.45		
Isolation: intra-system (dB)	≥28		
Intermodulation IM3 (2×43dBm carrier)	≤-150dBc		
Impedance (Ω)	50		
Max. power per input (W)	200		
Lightning protection	Dc Ground		



Mechanical specifications	
Connector	10×7/16DIN-Female
Connector position	Bottom
Height×width×depth (mm)	800×900×107
Packing size (mm)	1075×1015×205
Antenna weight (kg)	29
Installation kit weight (kg)	5.4
Packing weight (kg)	40
Wind load (N,at 150km/h) Frontal/Lateral/Rearside	780/100/900
Max. wind velocity (km/h)	216
Reflector material	Aluminum Alloy
Radome material	ASA
Radome color	Gray
Mechanical tilt (°)	0~10
Operating temperature (°C)	-40~60
Mounting hardware (mm)	Φ50~Φ115

