

XXXXPoI 694~960MHz×2/1427~2690MHz×2 65°/65° 14.2/17.3dBi 2°~12°/2°~12° Integrated and replaceable RCU (Remote Control Unit) Antenna

Electrical specifications				
Frequency Range (MHz)	R1/R2--694~960×2			
	694~806	790~862	824~894	880~960
Polarization	±45°			
Gain at mid tilt (dBi)	13.5	13.7	13.9	14.2
Gain over all tilts (dBi)	13.4±0.5	13.6±0.5	13.8±0.5	14.1±0.5
Horizontal 3dB beamwidth (°)	67±6	64±6	63±5	61±5
Vertical 3dB beamwidth (°)	15.3±1.2	14±1.2	13.1±1.1	12.2±1
Front to back ratio (dB) Total power, ±30°	>22	>23	>24	>25
Cross polar ratio (dB) (at Boresight)	>16	>17	>18	>19
Electrical downtilt (°)	2~12			
Sidelobe suppression (dB) (First sidelobe above main beam)	>15	>16	>17	>18
VSWR	<1.5			
Isolation: intra-system (dB)	≥25			
Isolation: inter-system (dB)	R1//R2 ≥25 R1,R2//Y1,Y2 ≥28			
Intermodulation IM3 (2×43dBm carrier)	≤-153 dBc			
Impedance (Ω)	50			
Max. power per input (W) @50°C	400			
Lightning protection	Dc Ground			

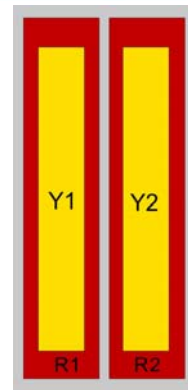
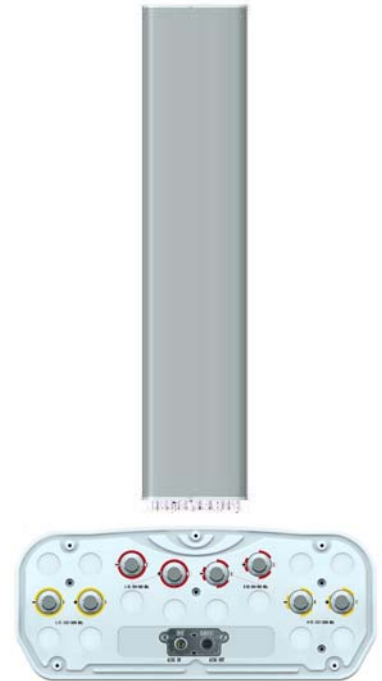
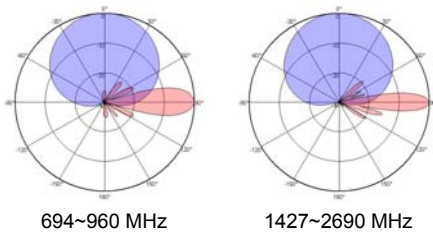
Electrical specifications					
Frequency Range (MHz)	Y1/Y2--1427~2690×2				
	1427~1518	1710~1920	1920~2200	2200~2490	2490~2690
Polarization	±45°				
Gain at mid tilt (dBi)	15.5	16.8	17.0	17.1	17.3
Gain over all tilts (dBi)	15.4±0.5	16.7±0.5	16.9±0.5	17.0±0.5	17.2±0.5
Horizontal 3dB beamwidth (°)	69±5	67±6	65±5	62±5	59±6
Vertical 3dB beamwidth (°)	8.1±0.6	6.8±0.6	6.2±0.5	5.3±0.5	4.9±0.5
Front to back ratio (dB) Total power, ±30°	>25	>26	>25	>25	>25
Cross polar ratio (dB) (at Boresight)	>15	>17	>17	>18	>17
Electrical downtilt (°)	2~12				
Sidelobe suppression (dB) (First sidelobe above main beam)	>16	>16	>17	>17	>15
VSWR	<1.5				
Isolation: intra-system (dB)	≥25				
Isolation: inter-system (dB)	Y1,Y2//Others ≥28				
Intermodulation IM3 (2×43dBm carrier)	≤-153 dBc				
Impedance (Ω)	50				
Max. power per input (W) @50°C	200				
Lightning protection	Dc Ground				

Mechanical specifications

Connector	8×4.3-10 Female
Connector position	Bottom
Height × width × depth (mm)	1499×469×198
Packing size (mm)	1880×585×350
Antenna weight (kg)	25.7
Installation kit weight (kg)	5.5
Packing weight (kg)	34.7
Wind load (N,at 150km/h) Frontal/Lateral/Rearside	629/202/657
Max. wind velocity (km/h)	216
Radome material	Fiberglass
Radome color	Gray
Mechanical tilt (°)	0~15
Operating temperature (°C)	-50~65
Mounting hardware (mm)	Φ50~Φ115

Integrated RET properties

RET model	TRCU-TQ10P2V01
RET type	Integrated (Replaceable)
RET protocol	AISG 2.0/3GPP
Power supply(V)	10-30 DC
Power consumption(W)	≤0.6 (Idle, 12V), ≤6 (In motion, 12V)
Adjustment time (Full Range)	< 4Mins
Adjustment cycles	> 50,000
Temperature range (°C)	-40~65
Lightning protection	3KA(8/20μs) @ Pin5 & Pin3; 5KA(8/20μs) @ Pin1 / Pin6 & Pin7
Connectors	2×8 Pin circle connector according to IEC 60130-9 and AISG. Daisy chain in:Male,Daisy chain out:Female Pin1:12V;Pin3:RS485B;Pin5:RS485A;Pin6:10-30V; Pin7:GND;Pin2&Pin4&Pin8:N/C


Antenna pattern sample for reference


Ant Array	RET Unique ID
R1	TY00000.....R1
R2	TY00000.....R2
Y1	TY00000.....Y1
Y2	TY00000.....Y2