

XXXPol 698~960MHz×2/1710~2690MHz 65°/65° 17/18dBi 2°~12°/2°~12° Integrated and replaceable RCU (Remote Control Unit) Antenna

Electrical specifications

Frequency Range (MHz)	R1/R2-698~960			
	698~806	790~862	824~894	880~960
Polarization	±45°			
Gain at mid tilt (dBi)	15.8	16.3	16.8	17.0
Gain over all tilts (dBi)	15.6±0.5	16.1±0.5	16.5±0.5	16.7±0.5
Horizontal 3dB beamwidth (°)	69±5	65±5	64±5	63±5
Vertical 3dB beamwidth (°)	8.8±0.7	8.1±0.5	7.9±0.5	7.6±0.4
Front to back ratio (dB) Total power, ±30°	>22	>23	>24	>25
Cross polar ratio (dB) (at Boresight)	>17	>18	>17	>19
Electrical downtilt (°)	2~12			
Sidelobe suppression (dB) (First sidelobe above main beam)	>16	>16	>16	>16
VSWR	<1.5			
Isolation: intra-system (dB)	≥25			
Isolation: inter-system (dB)	R1//R2 ≥ 25 R1,R2//Y1 ≥ 28			
Intermodulation IM3 (2×43dBm carrier)	≤-153 dBc			
Impedance (Ω)	50			
Max. power per input (W) @50°C	400			
Lightning protection	Dc Ground			

Electrical specifications

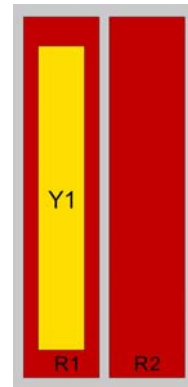
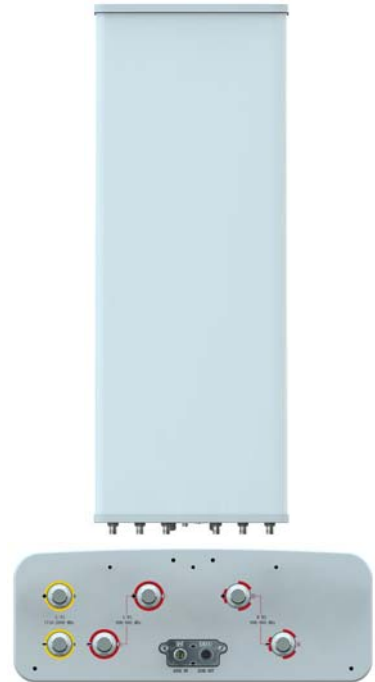
Frequency Range (MHz)	Y1 -1710-2690			
	1710~1920	1920~2200	2200~2490	2490~2690
Polarization	±45°			
Gain at mid tilt (dBi)	16.9	17.3	17.8	18.0
Gain over all tilts (dBi)	16.7±0.5	17.1±0.5	17.5±0.5	17.8±0.5
Horizontal 3dB beamwidth (°)	69±5	66±5	63±5	59±5
Vertical 3dB beamwidth (°)	6.5±0.4	5.4±0.5	4.7±0.4	4.3±0.4
Front to back ratio (dB) Total power, ±30°	>25	>25	>25	>25
Cross polar ratio (dB) (at Boresight)	>17	>18	>17	>16
Electrical downtilt (°)	2~12			
Sidelobe suppression (dB) (First sidelobe above main beam)	>16	>16	>16	>16
VSWR	<1.5			
Isolation: intra-system (dB)	≥25			
Isolation: inter-system (dB)	≥28			
Intermodulation IM3 (2×43dBm carrier)	≤-153 dBc			
Impedance (Ω)	50			
Max. power per input (W) @50°C	250			
Lightning protection	Dc Ground			

Mechanical specifications

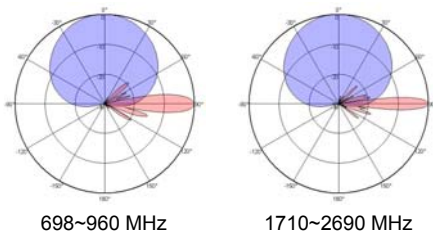
Connector	6×4.3-10 Female
Connector position	Bottom
Height × width × depth (mm)	2680×446×165
Packing size (mm)	3135×540×265
Antenna weight (kg)	43.7
Installation kit weight (kg)	8.8
Packing weight (kg)	59.2
Wind load (N, at 150km/h) Frontal/Lateral/Rearside	1440/375/1609
Max. wind velocity (km/h)	216
Radome material	Fiberglass
Radome color	Gray
Mechanical tilt (°)	0~8
Operating temperature (°C)	-50~65
Mounting hardware (mm)	Φ50~Φ115

Integrated RET properties

RET model	TRCU-TQ10P2V01
RET type	Integrated (Replaceable)
RET protocol	AISG 2.0/3GPP
Power supply(V)	10-30 DC
Power consumption(W)	≤0.6 (Idle, 12V), ≤6 (In motion, 12V)
Adjustment time (Full Range)	< 4Mins
Adjustment cycles	> 50,000
Temperature range (°C)	-40~65
Lightning protection	3KA(8/20μs) @ Pin5 & Pin3; 5KA(8/20μs) @ Pin1 / Pin6 & Pin7
Connectors	2×8 Pin circle connector according to IEC 60130-9 and AISG. Daisy chain in: Male, Daisy chain out: Female Pin1: 12V; Pin3: RS485B; Pin5: RS485A; Pin6: 10-30V; Pin7: GND; Pin2&Pin4&Pin8: N/C



Antenna pattern sample for reference



Ant Array	RET Unique ID
R1	TY00000.....R1
R2	TY00000.....R2
Y1	TY00000.....Y1