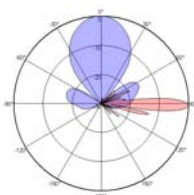
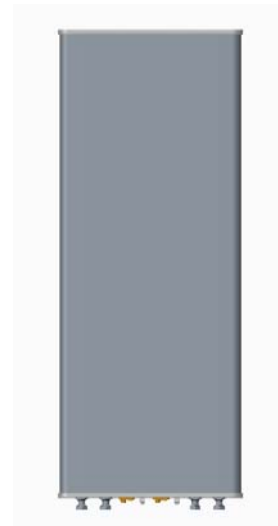


**XXPol 1710~2690MHz×2 33° 20.5dBi 0°~10° Integrated RCU (Remote Control Unit) Antenna**
**Electrical specifications**

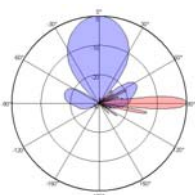
Frequency Range(MHz)	1710~2690×2			
	1710~1990	1920~2200	2200~2500	2500~2690
Polarization	±45°			
Gain at mid tilt (dBi)	19.2	19.7	20.2	20.7
Gain over all tilts (dBi)	19±0.5	19.5±0.5	20±0.5	20.5±0.5
Horizontal 3dB beamwidth (°)	37±3	34±4	30±4	27±3
Vertical 3dB beamwidth (°)	6.8±0.5	6.1±0.4	5.4±0.4	5.0±0.3
Front-to-back ratio (dB)	>25	>25	>25	>25
Cross-polar ratio (dB)	>15 (0°)	>15 (0°)	>15 (0°)	>15 (0°)
Electrical downtilt (°)	0~10			
Sidelobe suppression (dB) (First sidelobe above main beam)	>16	>17	>17	>16
VSWR	<1.5			
Isolation: intra-system (dB)	≥28			
Intermodulation IM3 (2×43dBm carrier)	≤-150 dBc			
Impedance (Ω)	50			
Max. power per input (W) @50°C	250			
RET Model	TRCU-TQ10P2V01(Replaceable, Included)			
RET Protocol	AISG 2.0 SRET			
Lightning protection	Dc Ground			

**Mechanical specifications**

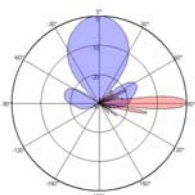
Connector	4×4.3-10-Female
Connector position	Bottom
Height×width×depth (mm)	1360×530×115
Packing size (mm)	1680×605×235
Antenna weight (kg)	23.2
Installation kit weight (kg)	5.4
Packing weight (kg)	32.4
Wind load (N,at 150km/h) Frontal/Lateral/Rearside	798/125/892
Max. wind velocity (km/h)	216
Radome material	Fiberglass
Radome color	Gray
Mechanical tilt (°)	0~15
Operating temperature (°C)	-50~65
Mounting hardware (mm)	Φ50~Φ115



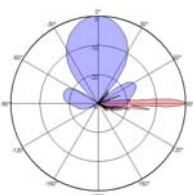
1710~1990MHz



1920~2200MHz



2200~2500MHz



2500~2690MHz

