

XXXXPol 3300~3800MHz 90° 15.5dBi 2° -12° Beamforming Antenna,RET Integrated.

Electrical specifications					
General parameters	Frequency range(MHz)		3300-3600	3600-3800	
	Polarization		±45°		
	Electrical downtilt(°)		2~12		
	Electrical downtilt tolerance(°)		±1		
Calibration and electrical parameters	Coupling factor between calibration port and each antenna port(dB)		-26±2		
	Max.amplitude tolerance from calibration port to input ports(dB)		<0.9		
	Max.phase tolerance from calibration port to input ports(°)		≤7		
	Ports VSWR		≤1.5		
	Co-polarization isolation between ports(dB)		≥20		
	Cross-polarization isolation between ports(dB)		≥25		
	RET Model		Integrated and replaceable		
	RET Protocol		AISG 2.0 SRET		
Radiation parameters	Single column beam	Horizontal 3dB beam width(°)		93±10	83±10
		Gain(dBi)		15±0.9	15.2±0.9
		Vertical 3dB beam width(°)		5.5±0.5	5.3±0.5
		Cross polar ratio(0°)(dB)		15	15
		Cross polar ratio(±60°)(dB)		9	9
		Front to back ratio(dB)		22	22
	65° Broadcast beam	Horizontal 3dB beam width(°)		65±9	65±9
		Gain(dBi)		15.2±0.9	15.2±0.9
		Vertical 3dB beam width(°)		5.6±0.5	5.4±0.5
		Cross polar ratio(0°)(dB)		15	15
		Cross polar ratio(±60°)(dB)		10	10
		Front to back ratio(dB)		24	24
	Vertical sidelobe suppression for first sidelobe above main beam(dB)		≤-15	≤-15	
	Service beam	0° direct beam gain(dBi)		21±0.9	21.2±0.9
		0° direct beam horizontal 3dB beam width(°)		25±5	25±5
		0° direct beam sidelobe suppression(dB)		11	11
		0° direct beam cross polar ratio(axial)(dB)		18	18
		0° direct beam front to back ratio(dB)		26	26

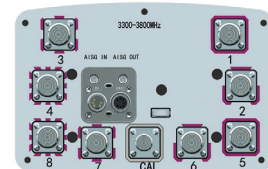
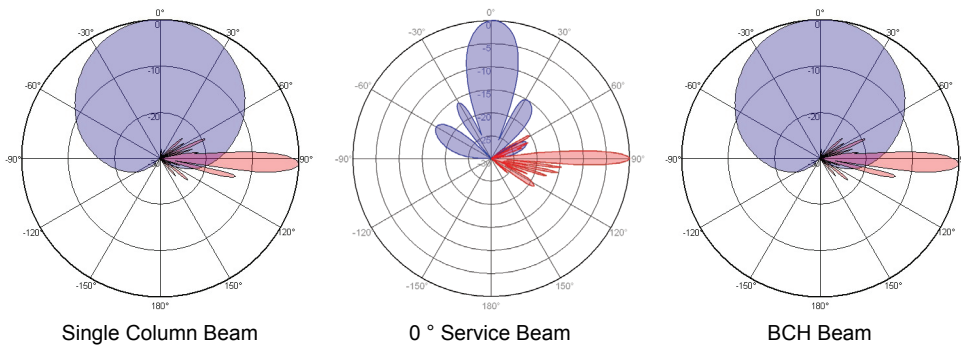
This publication is issued to provide information only and is not to form part of any order or contract.

Tongyu reserves the right to change specifications without prior notice.A4620220506A060027343069017

Tel: +86-760-85318111 Fax: +86-760-85594662

website: www.tycc.cn Email: sales@tycc.cn

Mechanical specifications	
Antenna dimensions(H×W×D)(mm)	1000×230×150
Packing size(mm)	1500×320×220
Antenna net weight(kg)	10.4
Installation kit weight(kg)	4.3
Packing weight(kg)	16.5
Mechanical downtilt(°)	0~10
Mast diameter(mm)	φ50~ φ115
Radome material	Fiberglass
Radome colour	Gray
Operating temperature(°C)	-40~60
Wind load(N,at 150km/h) Frontal/Lateral/Rearside	263/111/294
Connector type	9×4.3-10-Female
Connector position	Bottom
Installation kit model	63AA


T2°

T10°
