

**XXXXXPoI 1710~2690MHz×5 Multi Beam 12° 23dBi 6° Fixed Electrical Downtilt Antenna**
**Electrical specifications**

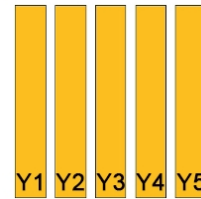
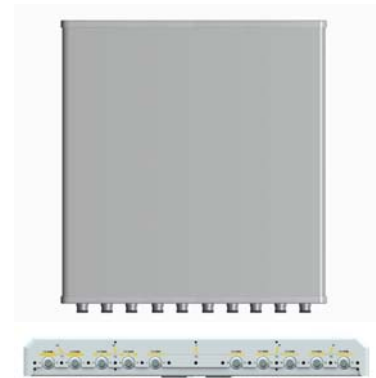
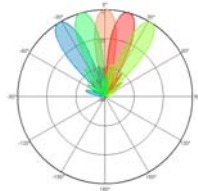
Frequency Range (MHz)	Y1/Y5:1710~2690				Y2/Y4:1710~2690			
	1710~1990	1920~2200	2200~2490	2490~2690	1710~1990	1920~2200	2200~2490	2490~2690
Polarization	±45°							
Gain over all tilts (dBi)	20.2±0.5	21.1±0.5	21.5±0.6	20.5±0.5	21.4±0.5	21.9±0.6	22.2±0.6	22.5±0.6
Horizontal beam centers (°)	46±3.0	40±3.0	34±2.2	30±1.2	22±1.2	19±1.0	17±0.8	15±0.5
Horizontal 3dB beamwidth (°)	17.2±0.9	14.3±1.5	11.1±1.2	10.2±0.5	13.1±0.8	12.1±0.6	10.2±0.6	9.0±0.6
Vertical 3dB beamwidth (°)	12.3±0.6	11.4±0.8	10.1±0.6	9.0±0.6	12.7±0.6	11.6±0.7	10.0±0.6	8.7±0.5
Front to back ratio (dB) Total power, ±30°	>27	>28	>27	>25	>29	>29	>27	>27
Cross polar ratio (dB) (at Boresight)	>15				>15			
Electrical downtilt (°)	6							
Sidelobe suppression (dB) (First sidelobe above main beam)	>16	>18	>15	>15	>17	>17	>15	>15
VSWR	≤1.5							
Isolation: intra-system (dB)	≥25							
Isolation: beam to beam (dB)	≥17							
Intermodulation IM3 (2×43dBm carrier)	≤-150 dBc							
Impedance (Ω)	50							
Max. power per input (W) @50°C	200							
Lightning protection	Dc Ground							

**Electrical specifications**

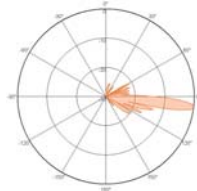
Frequency Range (MHz)	Y3:1710~2690			
	1710~1990	1920~2200	2200~2490	2490~2690
Polarization	±45°			
Gain over all tilts (dBi)	22.2±0.4	22.5±0.3	22.7±0.4	23.5±0.3
Horizontal beam centers (°)	0±0.5	0±0.5	0±0.5	0±0.5
Horizontal 3dB beamwidth (°)	12.1±0.7	11.0±0.7	10.1±0.4	9.1±0.4
Vertical 3dB beamwidth (°)	12.6±0.6	11.6±0.6	10.0±0.7	8.7±0.5
Front to back ratio (dB) Total power, ±30°	>28	>28	>29	>29
Cross polar ratio (dB) (at Boresight)	>15			
Electrical downtilt (°)	6			
Sidelobe suppression (dB) (First sidelobe above main beam)	>17	>17	>15	>15
VSWR	≤1.5			
Isolation: intra-system (dB)	≥25			
Isolation: beam to beam (dB)	≥17			
Intermodulation IM3 (2×43dBm carrier)	≤-150 dBc			
Max. power per input (W) @50°C	200			
Lightning protection	Dc Ground			

**Mechanical specifications**

Connector	10×4.3-10-Female
Connector position	Bottom
Height × width × depth (mm)	800×900×107
Packing size (mm)	1085×1020×205
Antenna weight (kg)	25
Installation kit weight (kg)	5.4
Packing weight (kg)	35.7
Wind load (N, at 150km/h) Frontal/Lateral/Rearside	780/100/900
Max. wind velocity (km/h)	216
Radome material	ASA
Radome color	Gray
Mechanical tilt (°)	0~10
Operating temperature (°C)	-40~60
Mounting hardware (mm)	Φ50~Φ115


**Antenna pattern sample for reference**


Horizontal Pattern



Vertical Pattern

This publication is issued to provide information only and is not to form part of any order or contract. Tongyu reserves the right to change specifications without prior notice. A0620210410000000020134071

Tel: +86-760-85318111 Fax: +86-760-85594662  
 website: [www.tycc.cn](http://www.tycc.cn) Email: [sales@tycc.cn](mailto:sales@tycc.cn)