

XPol 2515~2675MHz 65° 15.5dBi 2°~12° Beamforming Antenna, Integrated and replaceable RCU (Remote Control Unit)

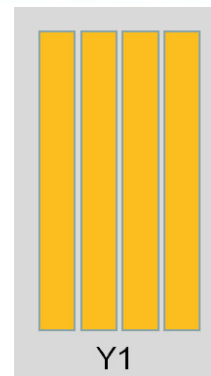
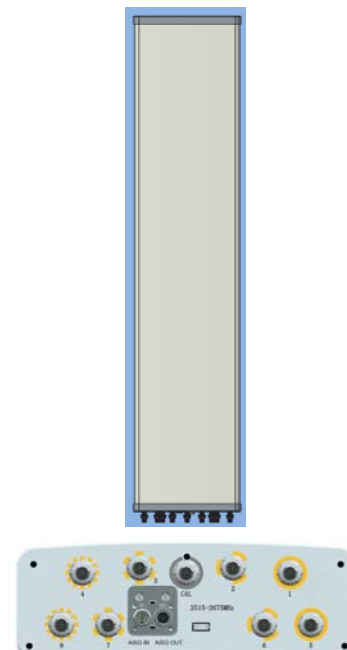
Electrical specifications-TDD			
General parameters	Frequency range(MHz)	2515~2675	
		2515~2675	
	Polarization	±45°	
	Electrical downtilt(°)	2°~12°	
	Electrical downtilt tolerance(°)	±1	
Calibration and electrical parameters	Coupling factor between calibration port and each antenna port(dB)	-26±2	
	Max.amplitude tolerance from calibration port to input ports(dB)	≤0.7	
	Max.phase tolerance from calibration port to input ports(°)	≤5	
	Ports VSWR	≤1.5	
	Co-polarization isolation between ports(dB)	2°≥20,3~12°≥25	
	Cross-polarization isolation between ports(dB)	≥25	
Radiation parameters	Single column beam	Horizontal 3dB beam width(°)	65°±15°
		Gain(dBi)	≥15.5
		±60°Gain roll-off at sector edge(dB)	12±3
		Vertical 3dB beam width(°)	≥5
		Cross polar ratio(0°)(dB)	≥15
		Cross polar ratio(±60°)(dB)	≥8
		Front to back ratio(dB)	≥25
	Vertical sidelobe suppression for first sidelobe above main beam(dB)	≤-15	
	Broadcast beam	Gain(dBi)	≥15
		SPR(±32.5°)(%)	72±7
		SPR(±60°)(%)	≥90
		±60°Gain roll-off at sector edge(dB)	12±3
		Vertical 3dB beam width(°)	≥5
		Front to back ratio(dB)	≥25
	Vertical sidelobe suppression for first sidelobe above main beam(dB)	≤-16	
	Service beam	0° direct beam gain(dBi)	≥21
		0° direct beam horizontal 3dB beam width(°)	≤25
		0° direct beam sidelobe suppression(dB)	≤-12
		±60° direct beam gain(dBi)	≥17
		±60° direct beam horizontal 3dB beam width(°)	≤23
		±60° direct beam horizontal sidelobe suppression(dB)	≤0
0° direct beam cross polar ratio(axial)(dB)		≥18	
0° direct beam front to back ratio(dB)		≥28	

Mechanical specifications

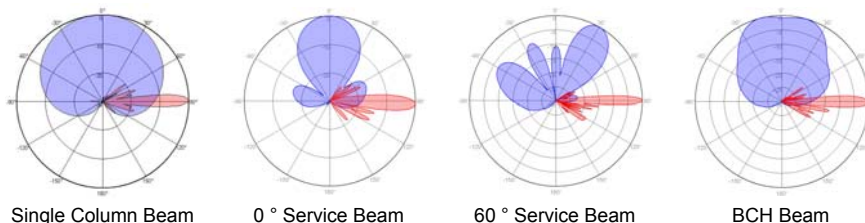
Connector	9×N-Female
Connector position	Bottom
Height × width × depth (mm)	1500×320×105
Packing size (mm)	1762×420×205
Antenna weight (kg)	16.2
Installation kit weight (kg)	7.3 (69AA)
Packing weight (kg)	26.1
Wind load (N,at 150km/h) Frontal/Lateral/Rearside	788/90/787
Max. wind velocity (km/h)	250
Radome material	Fiberglass
Radome color	Gray
Mechanical tilt (°)	0-15
Operating temperature (°C)	-50~65
Mounting hardware (mm)	Φ50~Φ115

Integrated RET properties

RET model	TRCU-TM10P1V01
RET type	Integrated (Replaceable)
RET protocol	AISG 2.0 / 3GPP
Power supply(V)	10-30 DC
Power consumption(W)	≤0.6 (Idle, 12V), ≤6 (in motion, 12V)
Adjustment time (Full Range)	< 4Mins
Adjustment cycles	> 50,000
Temperature range (°C)	-40~65
Lightning protection	3KA(8/20μs) @ Pin5& Pin3; 5KA(8/20μs) @ Pin1/ Pin6& Pin7
Connectors	2×8 Pin circle connector according to IEC 60130-9 and AISG. Daisy chain in: Male, Daisy chain out: Female Pin1: 12V; Pin3: RS485B; Pin5: RS485A; Pin6: 10-30V; Pin7: GND; Pin2 & Pin4 & Pin8: N/C



Ant Array	RET Unique ID
Y1	TY00000.....Y1

Antenna pattern sample for reference


Single Column Beam

0° Service Beam

60° Service Beam

BCH Beam