

XXXXPol 698~960MHz/1710~2690MHz/1710~2690MHz×2 65°/65°/65° 16.5/17.4/17.8dBi 2°~10°/2°~12°/2°~12° Integrated RCU (Remote Control Unit) Antenna

Electrical specifications							
Frequency Range (MHz)	C-R1-698~960			C-Y2-1710~2690			
	698~806	790~894	880~960	1710~1990	1920~2200	2200~2490	2490~2690
Polarization	±45°			±45°			
Gain at mid tilt (dBi)	16.1	16.6	16.8	17.0	17.3	17.7	17.6
Gain over all tilts (dBi)	15.8±0.5	16.3±0.5	16.5±0.6	16.8±0.6	17±0.7	17.4±0.6	17.3±0.7
Horizontal 3dB beamwidth (°)	68±2.9	66±3.5	64±3.5	67±7	66±6	60±6	58±7
Vertical 3dB beamwidth (°)	9.2±0.8	7.9±1.1	7.4±0.8	7.1±0.6	6.5±0.5	5.8±0.6	5.0±0.4
Front to back ratio (dB) Total power, ±30°	>23	>24	>24	>26	>26	>25	>24
Cross polar ratio (dB) (at Boresight)	>20	>20	>20	>18	>18	>17	>16
Electrical downtilt (°)	2~10			2~12			
Sidelobe suppression (dB) (First sidelobe above main beam)	>17	>17	>16	>18	>17	>16	>15
VSWR	<1.5			<1.5			
Isolation: intra-system (dB)	>25			>25			
Isolation: inter-system (dB)	>28			>28			
Intermodulation IM3 (2×43dBm carrier)	≤-153 dBc			≤-153 dBc			
Impedance (Ω)	50			50			
Max. power per input (W) @50°C	500			250			
Lightning protection	DC Ground						

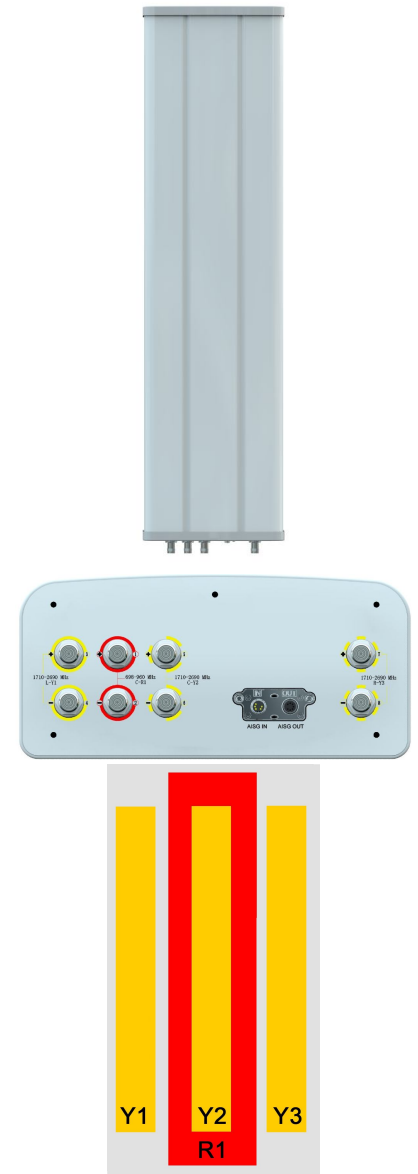
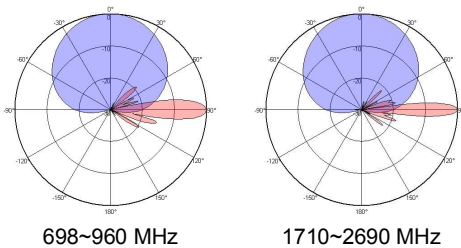
Electrical specifications				
Frequency Range (MHz)	L-Y1/R-Y3 -1710~2690			
	1710~1990	1920~2200	2200~2490	2490~2690
Polarization	±45°			
Gain at mid tilt (dBi)	17.1	17.4	17.8	18.1
Gain over all tilts (dBi)	16.8±0.6	17.1±0.7	17.5±0.7	17.8±0.7
Horizontal 3dB beamwidth (°)	68±6	66±6	60±5	60±5
Vertical 3dB beamwidth (°)	7.1±0.6	6.5±0.5	5.8±0.6	5.0±0.4
Front to back ratio (dB) Total power, ±30°	>25	>25	>25	>25
Cross polar ratio (dB) (at Boresight)	>18	>18	>18	>18
Electrical downtilt (°)	2~12			
Sidelobe suppression (dB) (First sidelobe above main beam)	>18	>17	>16	>15
VSWR	<1.5			
Isolation: intra-system (dB)	>25			
Isolation: inter-system (dB)	>28			
Intermodulation IM3 (2×43dBm carrier)	≤-153 dBc			
Impedance (Ω)	50			
Max. power per input (W) @50°C	250			
Lightning protection	DC Ground			

**Mechanical specifications**

Connector	8×4.3-10-Female
Connector position	Bottom
Height × width × depth (mm)	2680×379×177
Packing size (mm)	3125×485×275
Antenna weight (kg)	36.1
Installation kit weight (kg)	8.7
Packing weight (kg)	49.2
Wind load (N,at 150km/h) Frontal/Lateral/Rearside	1274/397/1424
Max. wind velocity (km/h)	216
Radome material	Fiberglass
Radome color	Gray
Mechanical tilt (°)	0~8
Operating temperature (°C)	-50~65
Mounting hardware (mm)	Φ50~Φ115

**Integrated RET properties**

RET model	TRCU-TQ10P2V01
RET type	Integrated (Replaceable)
RET protocol	AISG 2.0/3GPP
Power supply(V)	10-30 DC
Power consumption(W)	≤0.6 (Idle, 12V), ≤6 (In motion, 12V)
Adjustment time (Full Range)	< 4Mins
Adjustment cycles	> 50,000
Temperature range (°C)	-40~65
Lightning protection	3KA(8/20μs) @ Pin5 & Pin3; 5KA(8/20μs) @ Pin1 / Pin6 & Pin7
Connectors	2×8 Pin circle connector according to IEC 60130-9 and AISG. Daisy chain in:Male,Daisy chain out:Female Pin1:12V;Pin3:RS485B;Pin5:RS485A;Pin6:10-30V; Pin7:GND;Pin2&Pin4&Pin8:N/C

**Antenna pattern sample for reference**


Ant Array	RET Unique ID
R1	TY00000.....R1
Y1	TY00000.....Y1
Y2	TY00000.....Y2
Y3	TY00000.....Y3