



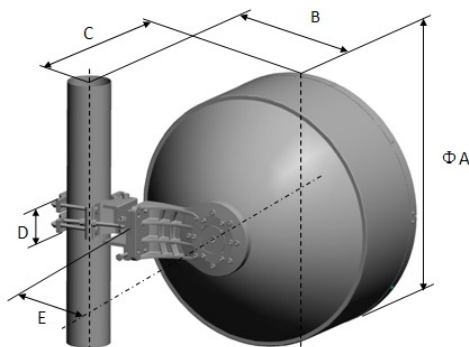
0.6m, Extremely High Performance, Single-Polarized, 21.2 ~ 23.6GHz

Electrical Specifications

Frequency (GHz)	21.2~23.6
Polarization	Single (V or H)
Gain ,Low (dBi)	40
Gain, Mid (dBi)	40.5
Gain, Top (dBi)	41
Beam Width (deg)	1.7
Cross-pol. Discrimination_XPD (dB)	30
F/B Ratio (dB)	71
VSWR (max)	1.3
Regulatory Compliance	ETSI EN 302 217-4-2V 1.5.1 Range3, Class4

Mechanical Specifications

Diameter (m)	0.6
Antenna Color	Pantone Cool Gray 1C
Wave-guide Size	153 IEC-R220
Radome Options	Molded
Azimuth Adjustment	Coarse : 360 ° Fine : ±15 °
Elevation Adjustment	Coarse : ±25° Fine : ±15 °
Diameter of Mounting Pole (mm)	Φ51 ~ Φ114
Wind Velocity Survival Rating (m/s)	70
Wind Velocity Operational (m/s)	56
Ice-load (mm)	25.4
Operational Temperature (°C)	-45 ~ +60
Axial Force (N)	1357
Side Force (N)	670
Twisting Moment (N*m)	578
Packaging	Carton
L×W×H (mm)	750×750×630



Dimensions (mm)	A	B	C	D	E
	675	382.5	451	89	210

Note: All size data above is equaled when the pole diameter is 114.