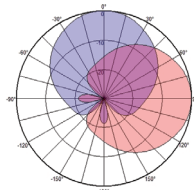
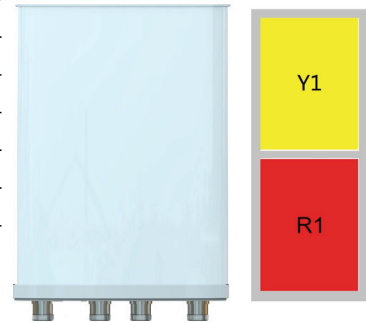


XXPol 698~960MHz/1710~2690MHz 65°/65° 7.5/8.5dBi
Electrical specifications

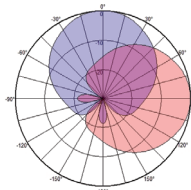
Frequency Range(MHz)	698~960		1710~2690	
	698~806	806~960	1710~2170	2300~2690
Polarization	$\pm 45^\circ$			
Gain (dBi)	7.5	7.5	8.5	8.5
Horizontal 3dB beamwidth (°)	75	75	65	62
Vertical 3dB beamwidth (°)	65	60	60	60
Front-to-back ratio (dB)	> 15			
VSWR	< 1.9			
Isolation: intra-system (dB)	≥ 25		≥ 24	
Intermodulation IM3 (2×43dBm carrier)	$\leq -150\text{dBc}$			
Impedance (Ω)	50			
Max. power per input (W) @50°C	50			
Lightning protection	Dc Ground			

Mechanical specifications

Connector	4×4.3-10 Female
Connector position	Bottom
Height×width×depth (mm)	275×228×107
Antenna weight (kg)	1.53
Radome material	ASA
Radome color	Gray
Operating temperature (°C)	-40~70



698~960MHz



1710~2690MHz

