

XXXXXPoI 698~960MHz/1710~2690MHz×2/1710~2690MHz×2 65°/65°/65° 15/15/15.3dBi 2°~12°/2°~12°/2°~12° Integrated and replaceable RCU (Remote Control Unit) Antenna

Electrical specifications				
Frequency Range (MHz)	R1 -698~960			
	698~806	790~862	824~894	880~960
Polarization	±45°			
Gain at mid tilt (dBi)	14.3	14.6	14.8	15.0
Gain over all tilts (dBi)	14.0±0.5	14.3±0.4	14.5±0.4	14.8±0.4
Horizontal 3dB beamwidth (°)	69±6	68±6	66±6	64±6
Vertical 3dB beamwidth (°)	17.5±1.5	16.7±1.4	16.0±1.4	15.2±1.2
Front to back ratio (dB) Total power, ±30°	>25	>25	>25	>24
Cross polar ratio (dB) (at Boresight)	>21	>20	>18	>19
Electrical downtilt (°)	2~12			
Sidelobe suppression (dB) (First sidelobe above main beam)	>18	>17	>17	>16
VSWR	<1.5			
Isolation: intra-system (dB)	≥25			
Isolation: inter-system (dB)	≥30			
Intermodulation IM3 (2×43dBm carrier)	≤-153 dBc			
Impedance (Ω)	50			
Max. power per input (W) @50°C	400			
Lightning protection	Dc Ground			

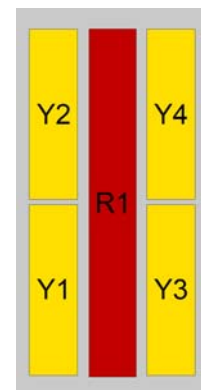
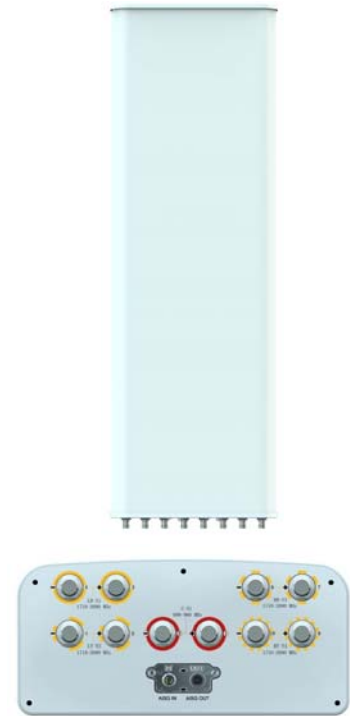
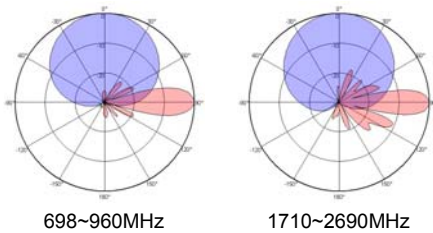
Electrical specifications								
Frequency Range (MHz)	Y1/Y3-1710~2690×2				Y2/Y4-1710~2690×2			
	1710~1920	1920~2200	2200~2490	2490~2690	1710~1920	1920~2200	2200~2490	2490~2690
Polarization	±45°							
Gain at mid tilt (dBi)	14.5	15.0	15.3	15.5	14.3	14.8	15.1	15.3
Gain over all tilts (dBi)	14.3±0.4	14.7±0.5	15.0±0.6	15.3±0.6	14.1±0.4	14.6±0.4	14.8±0.4	15.1±0.4
Horizontal 3dB beamwidth (°)	66±6	64±6	68±6	63±6	66±6	64±6	68±6	63±6
Vertical 3dB beamwidth (°)	15.8±1.4	13.8±1.3	12.6±1.1	12.0±1.3	14.0±1.1	12.2±0.9	11.2±0.9	10.3±1.5
Front to back ratio (dB) Total power, ±30°	>26	>26	>25	>24	>26	>26	>25	>24
Cross polar ratio (dB) (at Boresight)	>20	>19	>18	>18	>20	>19	>18	>18
Electrical downtilt (°)	2~12				2~12			
Sidelobe suppression (dB) (First sidelobe above main beam)	>18	>17	>17	>16	>18	>17	>17	>16
VSWR	<1.5				<1.5			
Isolation: intra-system (dB)	≥25				≥25			
Isolation: inter-system (dB)	≥30				≥30			
Intermodulation IM3 (2×43dBm carrier)	≤-153 dBc							
Impedance (Ω)	50							
Max. power per input (W) @50°C	200							
Lightning protection	Dc Ground							

Mechanical specifications

Connector	10×4.3-10 Female
Connector position	Bottom
Height × width × depth (mm)	1499×355×165
Packing size (mm)	1835×460×260
Antenna weight (kg)	23.2
Installation kit weight (kg)	5.4
Packing weight (kg)	32.3
Wind load (N,at 150km/h) Frontal/Lateral/Rearside	598/187/669
Max. wind velocity (km/h)	216
Radome material	Fiberglass
Radome color	Gray
Mechanical tilt (°)	0-15
Operating temperature (°C)	-50~65
Mounting hardware (mm)	Φ50~Φ115

Integrated RET properties

RET model	TRCU-TQ10P2V01
RET type	Integrated (Replaceable)
RET protocol	AISG 2.0/3GPP
Power supply(V)	10-30 DC
Power consumption(W)	≤0.6 (Idle, 12V), ≤6 (In motion, 12V)
Adjustment time (Full Range)	< 4Mins
Adjustment cycles	> 50,000
Temperature range (°C)	-40~65
Lightning protection	3KA(8/20μs) @ Pin5 & Pin3; 5KA(8/20μs) @ Pin1 / Pin6 & Pin7
Connectors	2×8 Pin circle connector according to IEC 60130-9 and AISG. Daisy chain in:Male,Daisy chain out:Female Pin1:12V;Pin3:RS485B;Pin5:RS485A;Pin6:10-30V; Pin7:GND;Pin2&Pin4&Pin8:N/C

Antenna pattern sample for reference


View from the front of the antenna

Ant Array	RET Unique ID
R1	TY00000.....R1
Y1	TY00000.....Y1
Y2	TY00000.....Y2
Y3	TY00000.....Y3
Y4	TY00000.....Y4