



**TDD : XXXXPoI2490~2690MHz/3300~3800MHz BCH 65°/65° 16.5/16.5dBi 2~12°/2~12°Beamforming**  
**FDD : XXXXPoI 698~862MHz×1/880~960MHz×1/1710~2170MHzx1/2490~2690MHzx1 65°/65°/65°/65°**  
**14.5/15/16.5/17dBi 2~12°/2~12°/2~12°/2~12° Integrated and replaceable RCU (Remote Control Unit)**  
**Antenna**

Electrical specifications-TDD					
General parameters	Frequency range(MHz)		P1-2490~3800		
			2490~2690	3300~3800	
	Polarization		±45°		
	Electrical downtilt(°)		2~12		
Electrical downtilt tolerance(°)		±1			
Calibration and electrical parameters	Coupling factor between calibration port and each antenna port(dB)		-26±2		
	Max.amplitude tolerance from calibration port to input ports(dB)		<0.9		
	Max.phase tolerance from calibration port to input ports(°)		≤8		
	Ports VSWR		≤1.5		
	Co-polarization isolation between ports(dB)		≥20@2~5°;≥25@6~12°		
	Cross-polarization isolation between ports(dB)		≥22		
	Inter array spacing(mm)		55(0.47λ@2590MHz,0.65λ@3550MHz)		
Radiation parameters	Single column beam	Horizontal 3dB beam width(°)		80±15	65±15
		Gain(dBi)		14.3±0.4	14.8±0.4
		Vertical 3dB beam width(°)		≥6.5	≥4.5
		Cross polar ratio(0°)(dB)		≥15	
		Cross polar ratio(±60°)(dB)		≥10	
		Front to back ratio(dB)		≥22	
		Vertical sidelobe suppression for first sidelobe above main beam(dB)		≥15	
	Broadcast beam	Gain(dBi)		16.5±0.7	16.5±0.8
		SPR(±60°)(%)		≥90	
		Vertical 3dB beam width(°)		≥6.5	≥4.5
		Cross polar ratio(0°)(dB)		≥18	
		Front to back ratio(dB)		≥25	
	Service beam	0° direct beam gain(dBi)		20±0.8	21±0.8
		0° direct beam horizontal 3dB beam width(°)		≤28	
		0° direct beam sidelobe suppression(dB)		≥10	
		0° direct beam cross polar ratio(axial)(dB)		≥18	
		0° direct beam front to back ratio(dB)		≥25	
		±30° direct beam gain(dBi)		18±0.8	19±0.8

**Electrical specifications**

Frequency Range (MHz)	R1-698~862		R2-880~960
	698~803	790~862	880~960
Polarization	$\pm 45^\circ$		
Gain at mid tilt (dBi)	14.0	14.5	15.0
Gain over all tilts (dBi)	13.9 $\pm$ 0.7	14.4 $\pm$ 0.6	14.9 $\pm$ 0.6
Horizontal 3dB beamwidth ( $^\circ$ )	69 $\pm$ 6	67 $\pm$ 5	65 $\pm$ 6
Vertical 3dB beamwidth ( $^\circ$ )	11.0 $\pm$ 0.9	9.9 $\pm$ 0.7	9.1 $\pm$ 0.5
Front to back ratio(dB) Total power, 180 $^\circ$	>20	>22	>23
Cross polar ratio (dB) (at Boresight)	>17	>18	>18
Electrical downtilt ( $^\circ$ )	2~12		
Sidelobe suppression (dB) (First sidelobe above main beam)	>15	>15	>16
VSWR	<1.5		
Isolation: intra-system (dB)	$\geq$ 25		
Isolation: inter-system (dB)	$\geq$ 28		
Intermodulation IM3 (2 $\times$ 43dBm carrier)	$\leq$ -150 dBc		
Impedance ( $\Omega$ )	50		
Max. power per input (W) @50 $^\circ$ C	400		
Lightning protection	Dc Ground		

**Electrical specifications**

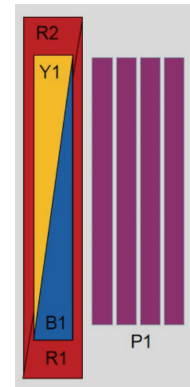
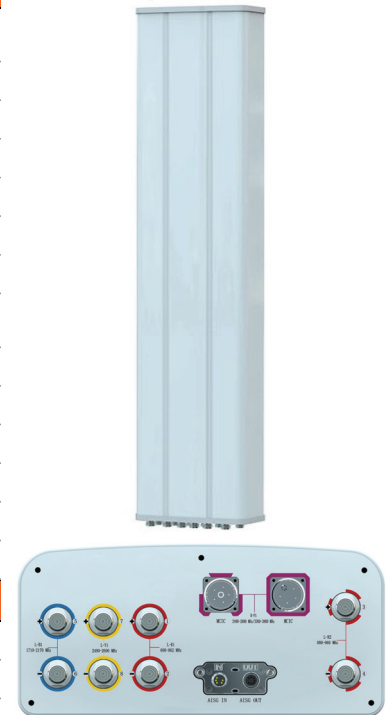
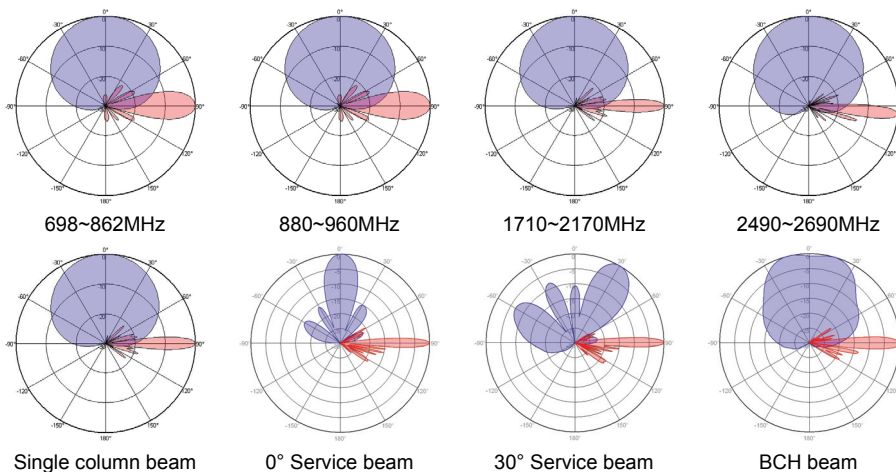
Frequency Range (MHz)	B1 -1710~2170		Y1 -2490~2690
	1710~1990	1920~2170	2490~2690
Polarization	$\pm 45^\circ$		
Gain at mid tilt (dBi)	16.5	16.8	17.2
Gain over all tilts (dBi)	16.3 $\pm$ 0.6	16.6 $\pm$ 0.6	17.0 $\pm$ 0.6
Horizontal 3dB beamwidth ( $^\circ$ )	67 $\pm$ 6	64 $\pm$ 5	59 $\pm$ 5
Vertical 3dB beamwidth ( $^\circ$ )	6.8 $\pm$ 0.4	6.0 $\pm$ 0.5	4.7 $\pm$ 0.3
Front to back ratio (dB) Total power, $\pm 30^\circ$	>25	>26	>25
Cross polar ratio (dB) (at Boresight)	>17	>20	>19
Electrical downtilt ( $^\circ$ )	2~12		
Sidelobe suppression (dB) (First sidelobe above main beam)	>16	>15	>15
VSWR	<1.5		
Isolation: intra-system (dB)	$\geq$ 25		
Isolation: inter-system (dB)	$\geq$ 28		
Intermodulation IM3 (2 $\times$ 43dBm carrier)	$\leq$ -150 dBc		
Impedance ( $\Omega$ )	50		
Max. power per input (W) @50 $^\circ$ C	200		
Lightning protection	Dc Ground		

**Mechanical specifications**

Connector	TDD:1×(MQ4+MQ5) Connector-Male FDD:8×4.3-10-Female
Connector position	Bottom
Height × width × depth (mm)	2080×379×177
Packing size (mm)	2465×485×275
Antenna weight (kg)	34
Installation kit weight (kg)	5.5
Packing weight (kg)	44.5
Wind load (N,at 150km/h) Frontal/Lateral/Rearside	936/294/1046
Max. wind velocity (km/h)	216
Radome material	Fiberglass
Radome color	Gray
Mechanical tilt (°)	0~10
Operating temperature (°C)	-50~65
Mounting hardware (mm)	Φ50~Φ115

**Integrated RET properties**

RET model	TRCU-TQ10P2V01
RET type	Integrated (Replaceable)
RET protocol	AISG 2.0 / 3GPP
Power supply(V)	10-30 DC
Power consumption(W)	≤0.6 (Idle, 12V), ≤6 (in Motion, 12V)
Adjustment time (Full Range)	< 4Mins
Adjustment cycles	> 50,000
Temperature range (°C)	-40~65
Lightning protection	3KA(8/20μs) @ Pin5& Pin3; 5KA(8/20μs) @ Pin1/ Pin6& Pin7
Connectors	2 x 8 Pin circle connector according To IEC 60130-9 And AISG. Daisy chain in:Male,Daisychain out :Female Pin1:12V;Pin3:RS485B;Pin5:RS485A;Pin6:10-30V;Pin7:GND; Pin2 &Pin4 & Pin8:N/C


**Antenna pattern sample for reference**


Ant Array	RET Unique ID
R1	TY00000.....R1
R2	TY00000.....R2
B1	TY00000.....B1
Y1	TY00000.....Y1
P1	TY00000.....P1

**Beamforming Weights**

Broadcast beamwith 65°		Frequency Range(MHz)	port	port1	port2	port3	port4	port5	port6	port7	port8
P0	Fullpower broadcast tilt2-12	2490~2690	Amplitude	1	1	0	0	0	0	1	1
			Phase(°)	50	0	0	0	0	0	0	0
P1	Fullpower broadcast tilt2-12	2490~2690	Amplitude	0	0	1	1	1	1	0	0
			Phase(°)	0	0	0	50	50	0	0	0
P0	Fullpower broadcast tilt2-12	3300~3800	Amplitude	1	1	0	0	0	0	1	1
			Phase(°)	90	0	0	0	0	0	0	0
P1	Fullpower broadcast tilt2-12	3300~3800	Amplitude	0	0	1	1	1	1	0	0
			Phase(°)	0	0	0	90	90	0	0	0
Service beam		Frequency Range(MHz)	port	port1	port2	port3	port4	port5	port6	port7	port8
+45°	0°for tilt2-12	2490~3800	Amplitude	1	1	1	1	0	0	0	0
			Phase(°)	0	0	0	0	0	0	0	0
-45°	0°for tilt2-12	2490~3800	Amplitude	0	0	0	0	1	1	1	1
			Phase(°)	0	0	0	0	0	0	0	0
+45°	30°for tilt2-12	2490~2690	Amplitude	1	1	1	1	0	0	0	0
			Phase(°)	0	100	200	300	0	0	0	0
-45°	30°for tilt2-12	2490~2690	Amplitude	0	0	0	0	1	1	1	1
			Phase(°)	0	0	0	0	0	100	200	300
+45°	30°for tilt2-12	3300~3800	Amplitude	1	1	1	1	0	0	0	0
			Phase(°)	0	130	260	390	0	0	0	0
-45°	30°for tilt2-12	3300~3800	Amplitude	0	0	0	0	1	1	1	1
			Phase(°)	0	0	0	0	0	130	260	390

This publication is issued to provide information only and is not to form part of any order or contract.  
Tongyu reserves the right to change specifications without prior notice.A0320220506A100040943069061

Tel: +86-760-85318111 Fax: +86-760-85594662

website: [www.tycc.cn](http://www.tycc.cn) Email: [sales@tycc.cn](mailto:sales@tycc.cn)