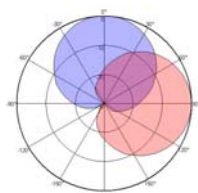
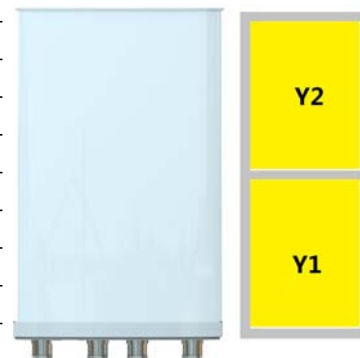


XXPoI 1710~2690MHz×2 65° 9dBi 0° Fixed Electrical Downtilt Antenna
Electrical specifications

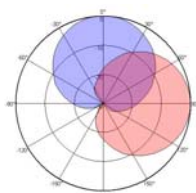
Frequency Range(MHz)	1710~2690×2			
	1710~1920	1920~2200	2200~2500	2500~2690
Polarization	±45°			
Gain (dBi)	8	8.2	8.6	9
Horizontal 3dB beamwidth (°)	68	65	62	60
Vertical 3dB beamwidth (°)	65	63	60	58
Front-to-back ratio (dB)	≥23			
Cross-polar ratio (dB)	≥15(±60°≥10)			
Electrical downtilt (°)	0			
VSWR	≤1.5			
Isolation: intra-system (dB)	≥25			
Intermodulation IM3 (2×43dBm carrier)	≤-150dBc			
Impedance (Ω)	50			
Max. power per input (W) @50°C	150			
Lightning protection	Dc Ground			

Mechanical specifications

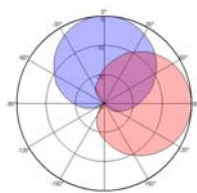
Connector	4×4.3-10-Female
Connector position	Bottom
Height×width×depth (mm)	300×160×80
Packing size (mm)	380×225×165
Antenna weight (kg)	2.1
Installation kit weight (kg)	0.1
Packing weight (kg)	2.8
Max. wind velocity (km/h)	216
Radome material	Fiberglass
Radome color	Gray
Mechanical tilt (°)	0~15
Operating temperature (°C)	-40~60
Mounting hardware (mm)	Φ50~Φ75



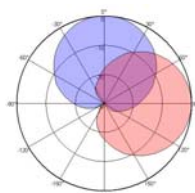
1710~1920MHz



1920~2170MHz



2200~2500MHz



2500~2690MHz

